

QUICK START

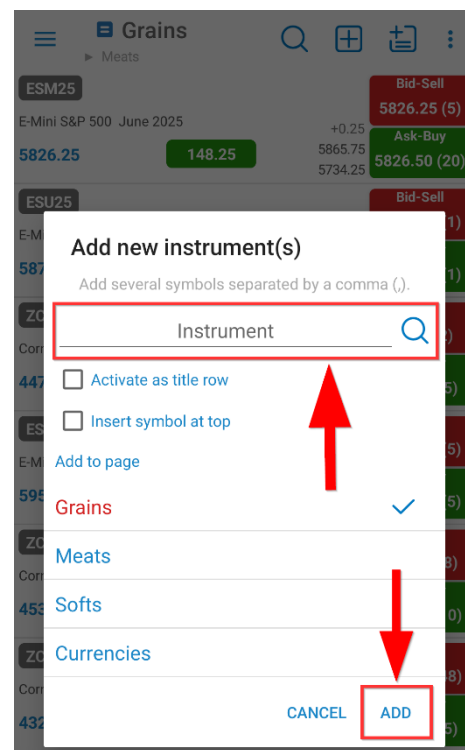
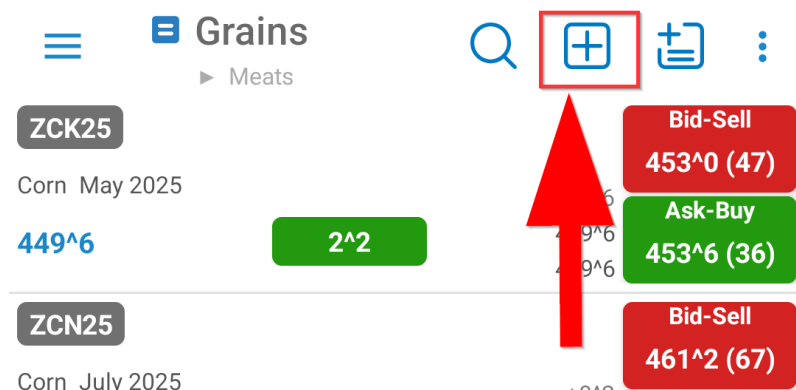


1. Add your quotes

After you log in, you are automatically redirected to the Quotes Monitor Screen.

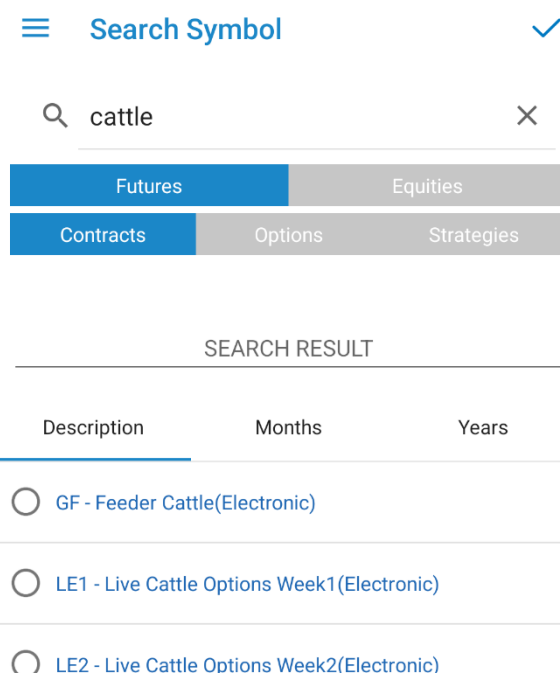
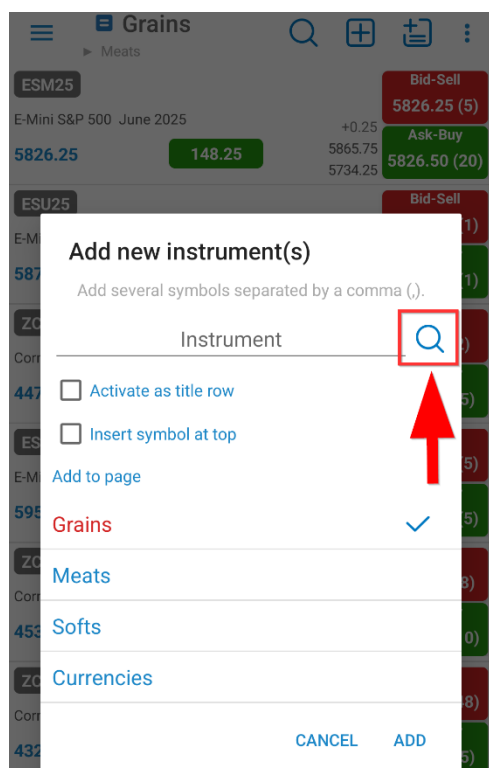
Quick Add Quotes

➤ tap  > type instrument name > tap **ADD**




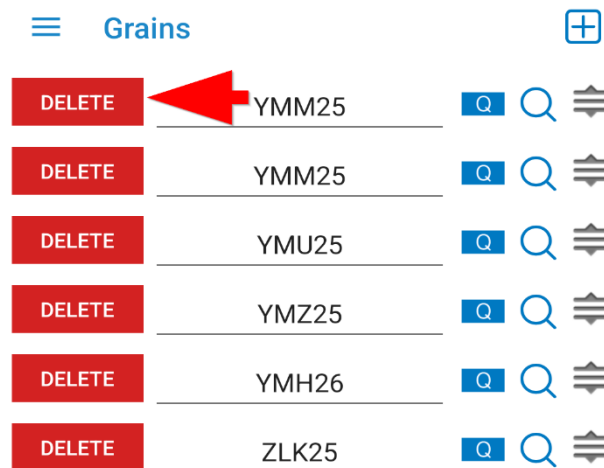
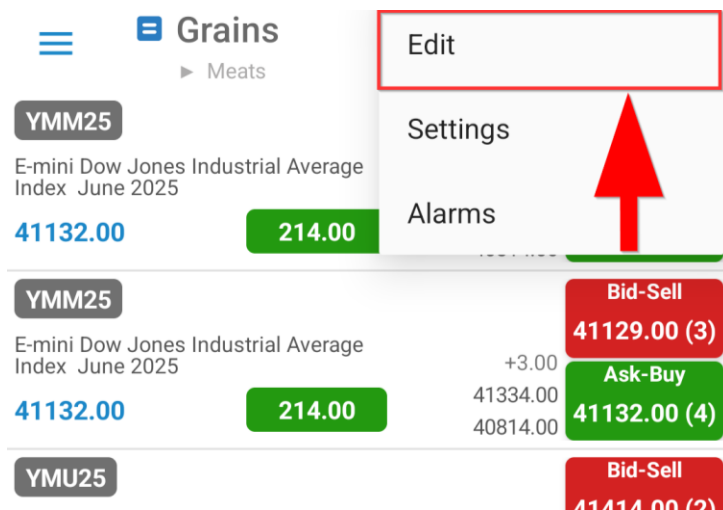
Add Quotes using Symbol Search

➤ tap  > tap  > search instrument > DONE



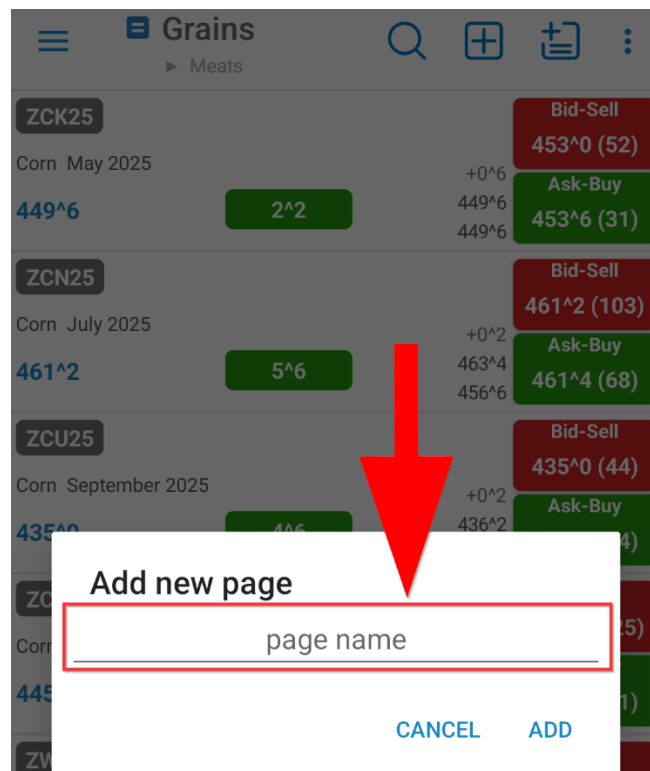
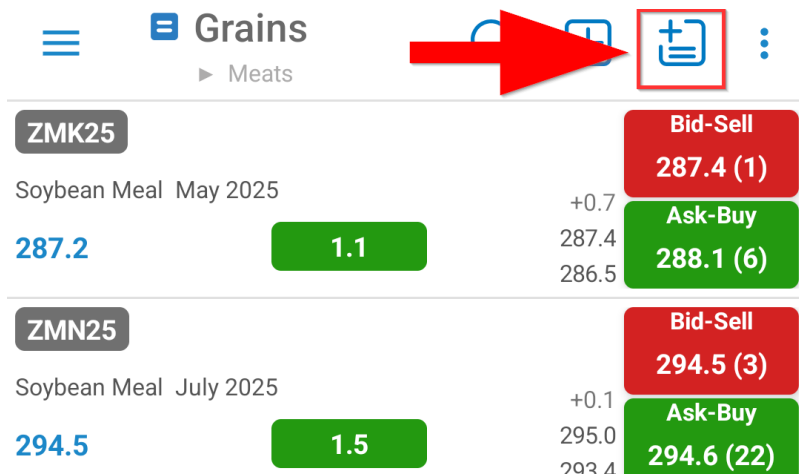
Edit/Delete Quotes

- Edit Quotes: tap  > Edit > edit instrument/(s) > Back Button
- Delete Quotes: tap **DELETE** > Back Button




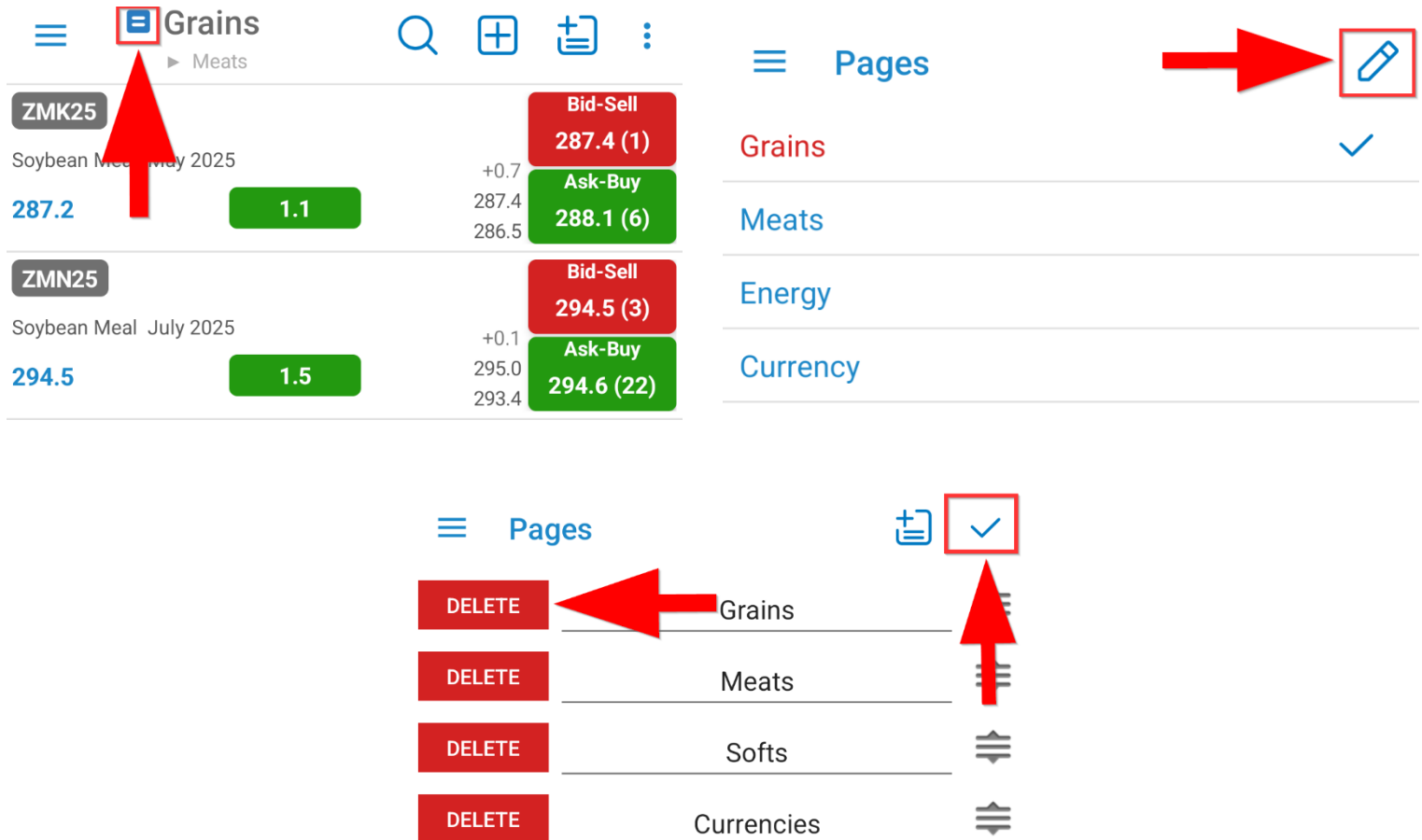
Create page

- Tap  > type page name > **ADD**



Edit/Delete pages

- Edit page/(s): tap  to bring up a list of existing page > **EDIT** > edit page name > ✓
- Delete page(s): tap **DELETE** > ✓



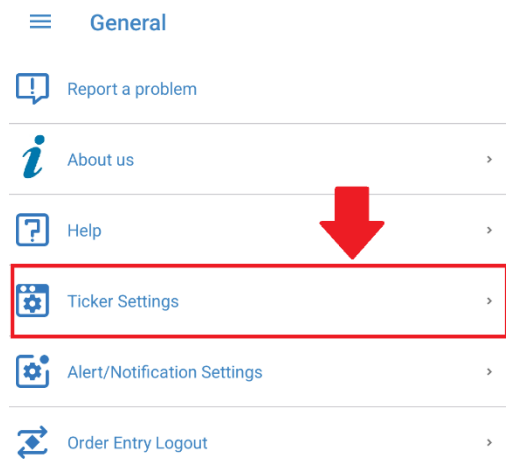
The screenshot shows the app's main interface. On the left, the 'Grains' page is displayed with a red box around the 'Grains' title and a red arrow pointing to it. The page shows two contracts: ZMK25 (Soybean Meal May 2025) and ZMN25 (Soybean Meal July 2025). Each contract has a 'Bid-Sell' price and an 'Ask-Buy' price. On the right, the 'Pages' list is shown with a red box around the 'Grains' entry and a red arrow pointing to it. Below the 'Pages' list, there is a 'DELETE' button for each page, with a red arrow pointing to the 'DELETE' button for 'Grains'. At the top right, there is a red box around the 'edit' icon (a pencil) and a red arrow pointing to it.

Contract	Symbol	Expiry	Bid-Sell	Ask-Buy
ZMK25	Soybean Meal	May 2025	287.4 (1)	288.1 (6)
ZMN25	Soybean Meal	July 2025	294.5 (3)	294.6 (22)

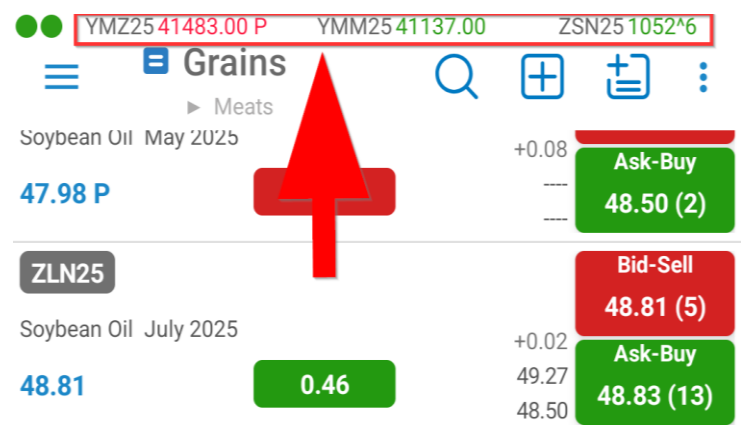
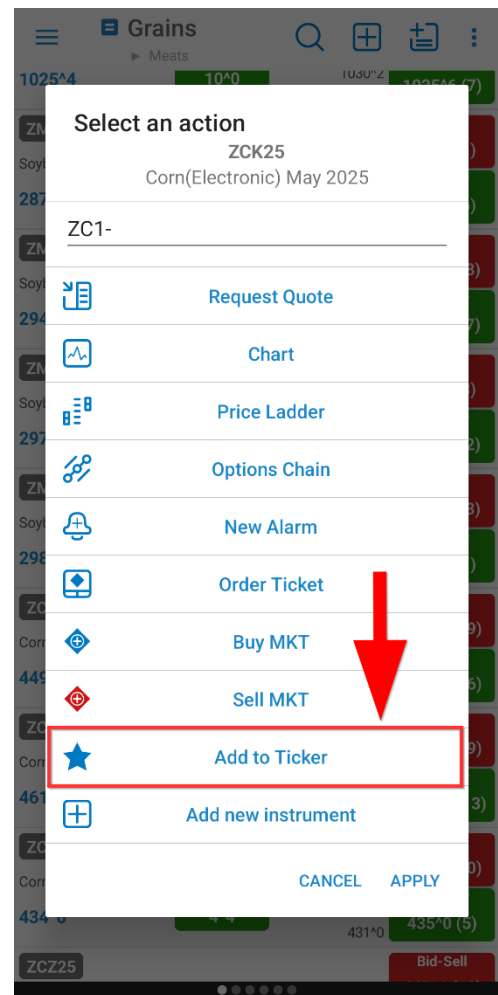
Page	Action
Grains	DELETE
Meats	DELETE
Softs	DELETE
Currencies	DELETE

Add to Ticker

- you can monitor your favorite quotes in a Ticker view available at the top of your app
- your favorite quotes can be edited from General > Ticker Settings > Edit Your Favorite Quotes
- you can quickly add any quote to your Ticker using the Quick Action Menu from Quotes Monitor
- Quick Action Menu is revealed at a long tap on any quote



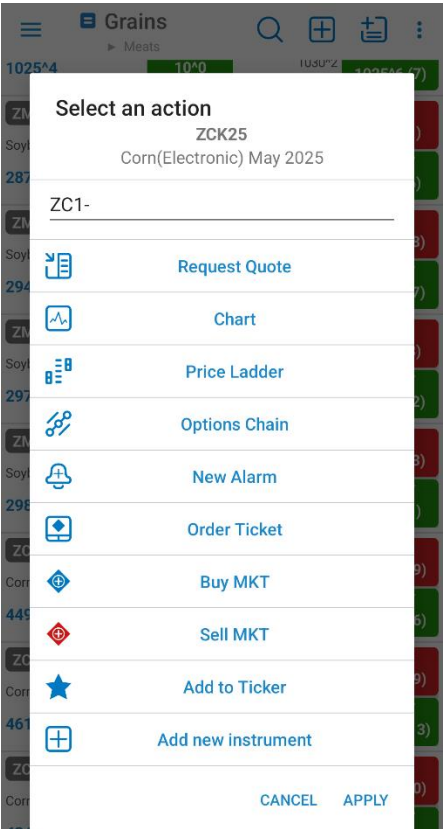
SAVE SETTINGS



Quotes Actions

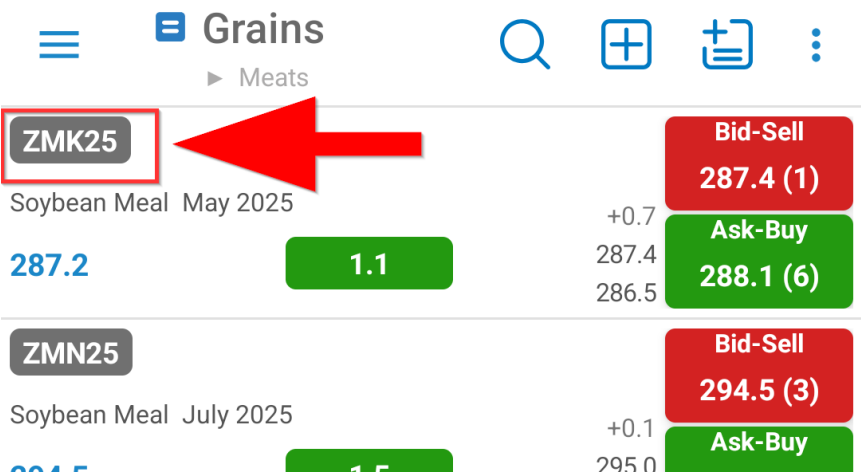
Quick Action Menu

➤ long tap on any quote to bring up Quick Action Menu



Instrument Details

➤ tap the Instrument Symbol to bring up Instrument Details



ZMK25		
Soybean Meal(Electronic) May 2025		
Exchange:	CBOT	
Instrument Value:	\$28,720.00	
Minimum tick:	0.1	
Minimum tick value:	\$10.00	
Daily hard limits:	0.1 -	
Open time:	7:00:00 PM CDT	
Close time:	1:20:00 PM CDT	
Expiration date:	05/14/2025	
Initial Margin:	\$2,310.00	
Period	High	Low
Lifetime	404.0	282.1
1 Year	378.4	282.1
6 Months	328.5	282.1
3 Months	310.8	282.1
1 Month	302.0	285.5
Session	287.4	286.5

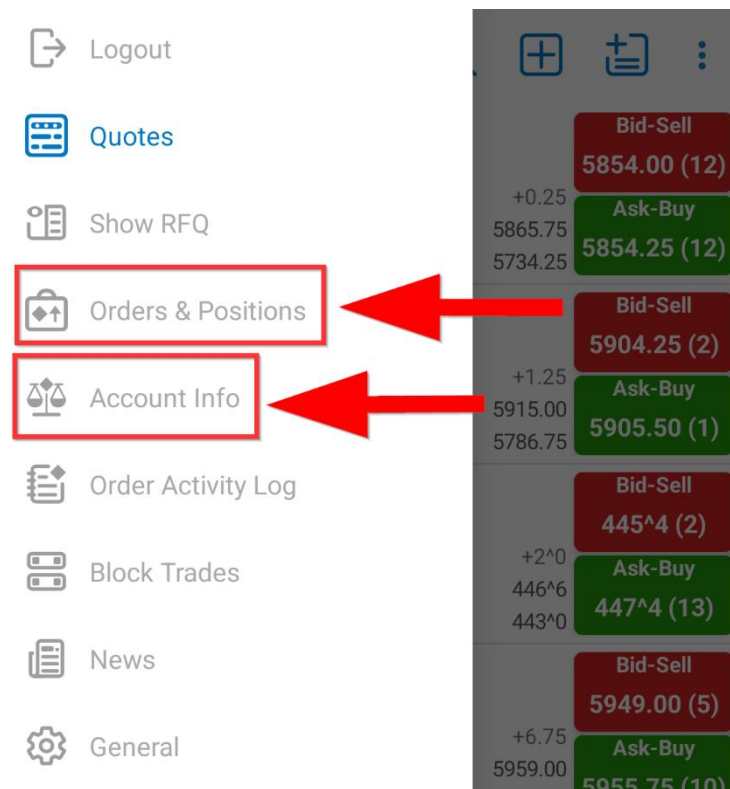
2. Visualize your portfolio

Orders & Positions Monitor

- You can access the Orders & Positions Monitor from the vertical menu on the left

Account Information

- You can access the Account Info section from the vertical menu on the left



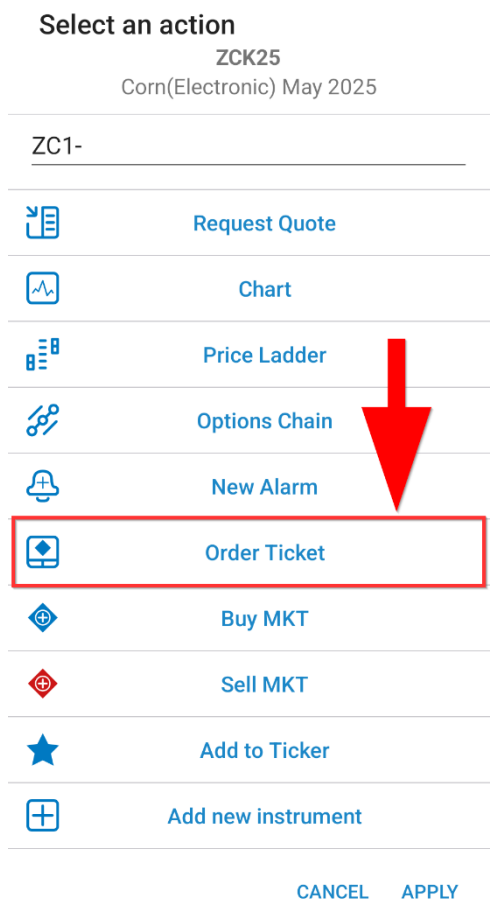
Start trading

How to use Order Ticket (OT)?

You can access Order Ticket from the following screens:

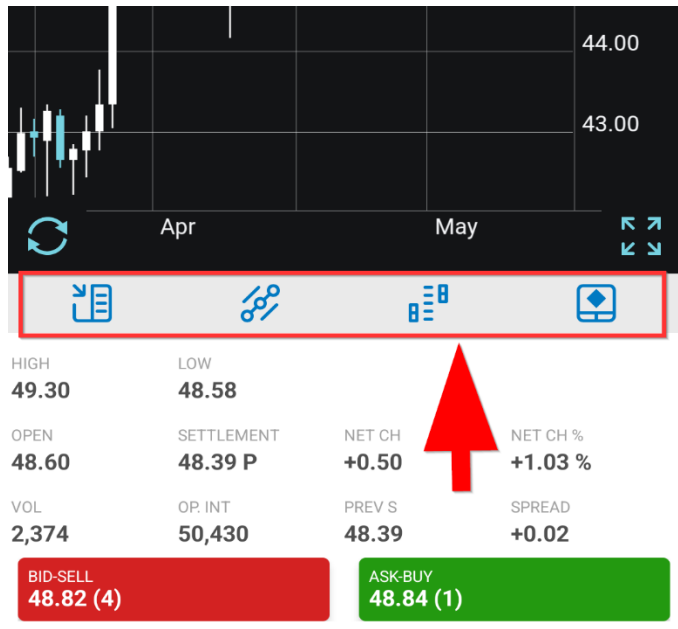
1.Quotes Monitor’s Quick Action Menu


➤ Quotes Monitor Screen > Long Tap on any Quote > **Order Ticket**

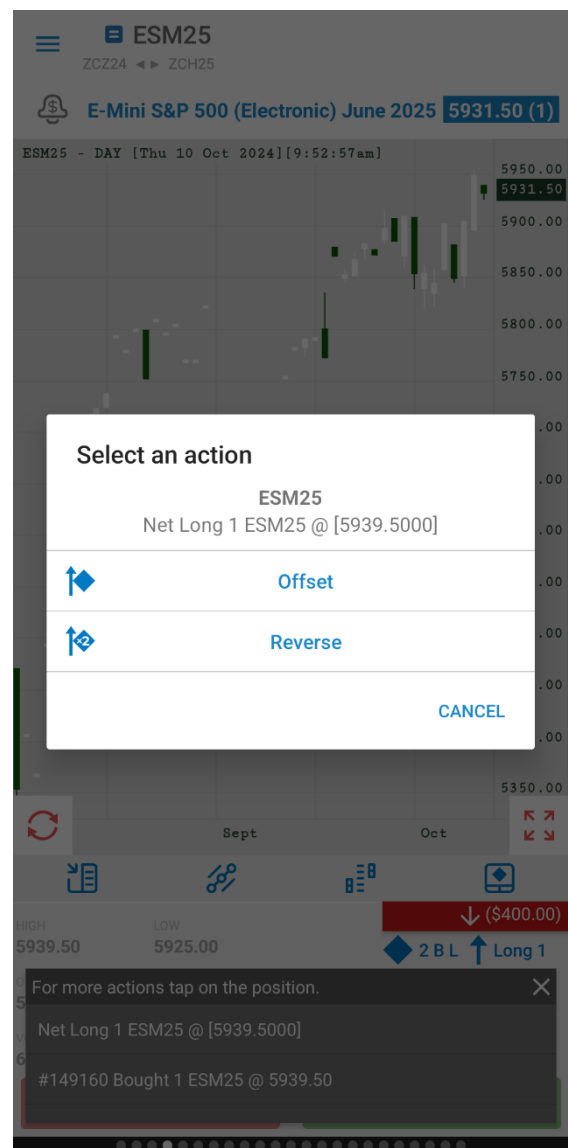
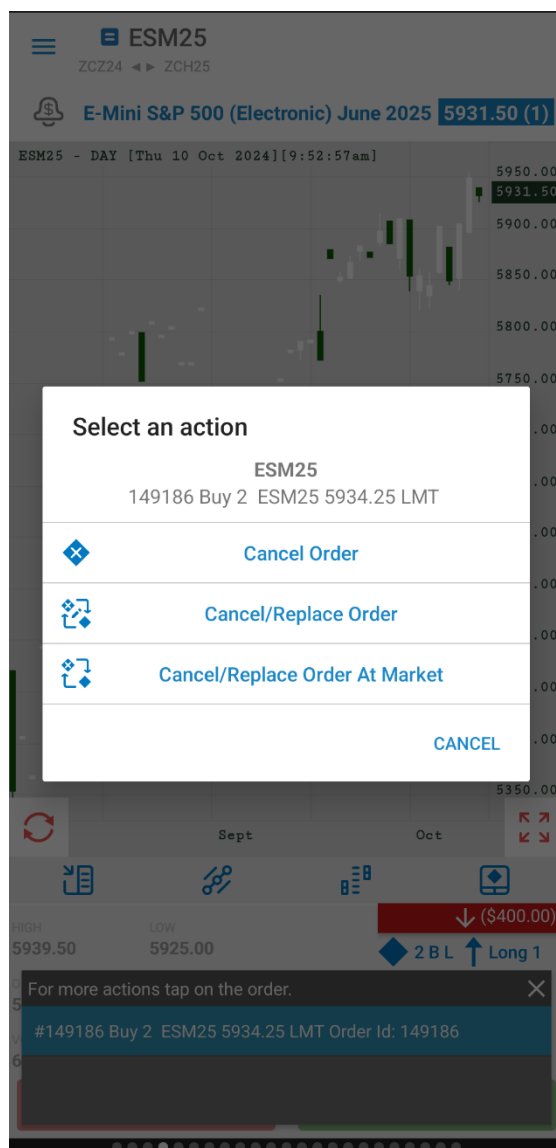
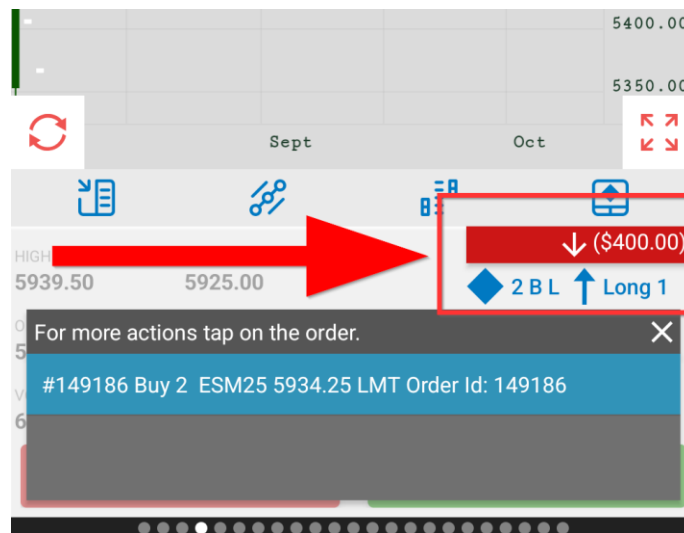


2.Quote Details

➤ Quotes Monitor Screen> Tap on any Quote > **Trade**



- You can also trade by pressing the **Buy** or **Sell** buttons
- On the right of Low, just under the **Trade**  button you can see your **orders** and **positions**. Tap on them to interact.



3.Price Ladder (PL)

- Quotes Monitor Screen > Tap on any Quote > **Price Ladder** > tap on a Price Ladder row

4.Full Screen Chart (FCS)

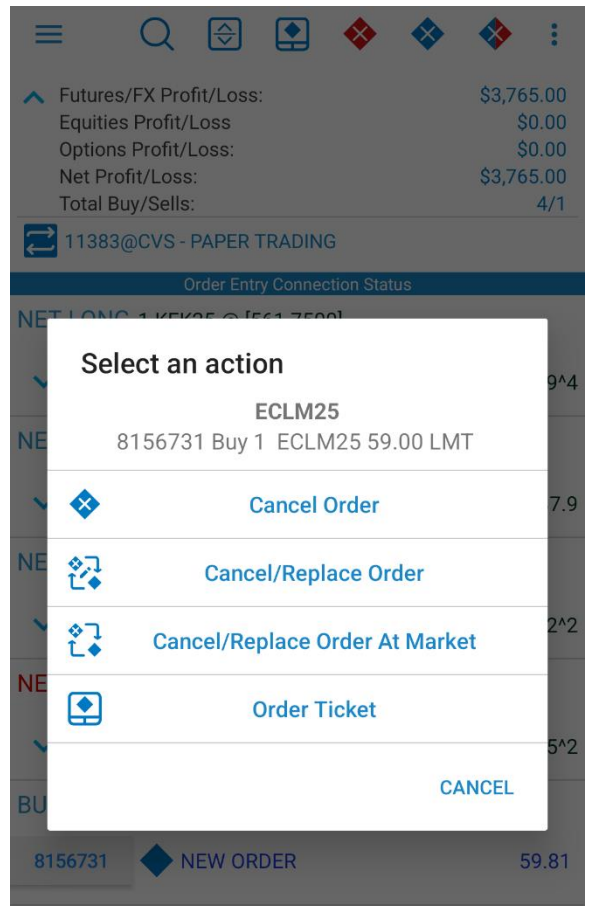
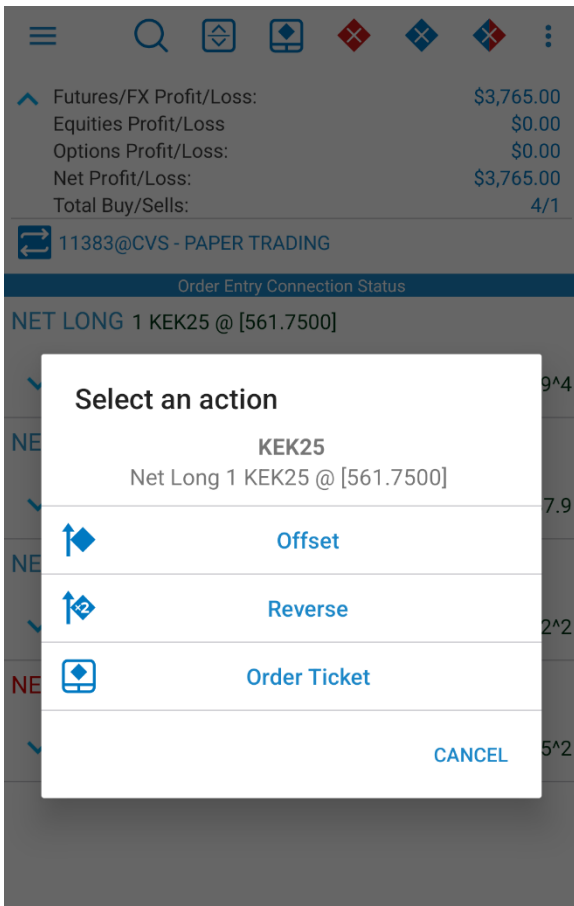
- Quotes Monitor Screen > tap on any Quote > tap **Chart** > double tap on Order Entry Bar



More Order Entry Actions

1.Orders & Positions Monitor's Quick Action Menu


- Long tap on any order or position to bring up Quick Action Menu
 - > tap desired OE action




2.Order or Position Detail

➤ Tap on any order to enter the Order Detail screen


Order Detail




Cancel




CXL/R




CXL/R MKT







Chart





Price Ladder

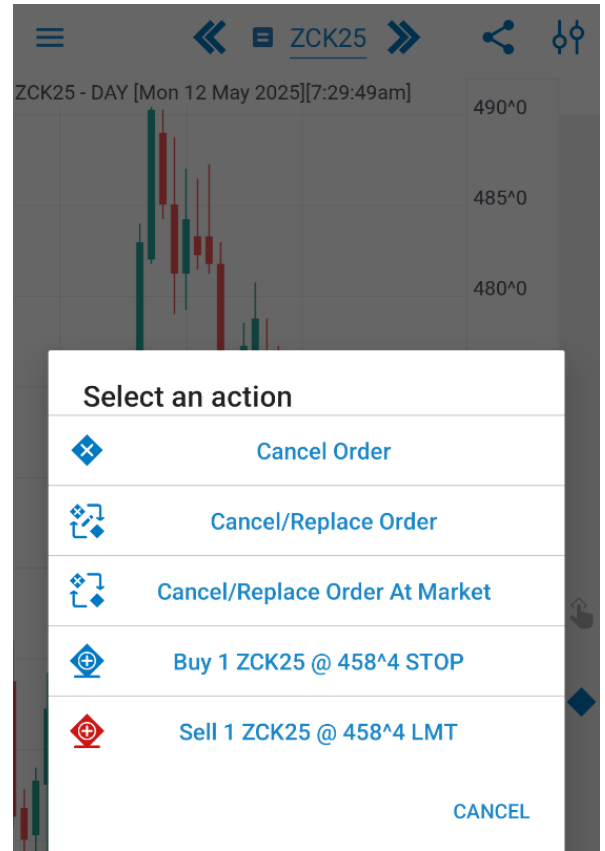
ORD. TIME	SESSION	LIFETIME	GTD
12:39:35 PM	Electronic	Day	
SIDE	QTY	INSTRUMENT	PRICE
Buy	1	ECLM25	59.00
ORD. TYPE	ACTIVE AT		LMT. PRICE
LMT			
ACCOUNT	SALES CODE	ENTERED BY	
11383		VMorar1	
ORD. #	STATUS		LAST
8156731	 New Order		59.81
SPECIAL INSTRUCTIONS			

➤ Tap on any position to enter the Position Detail screen

Position Detail			
			
Offset	Reverse	Chart	Price Ladder
LAST	PROFIT/LOSS		
435^2	\$2,675.00		
SIDE	QTY	INSTRUMENT	PRICE
Net Short	1	ZCK25	[488.7500]
ACCOUNT	SALES CODE		
11383			

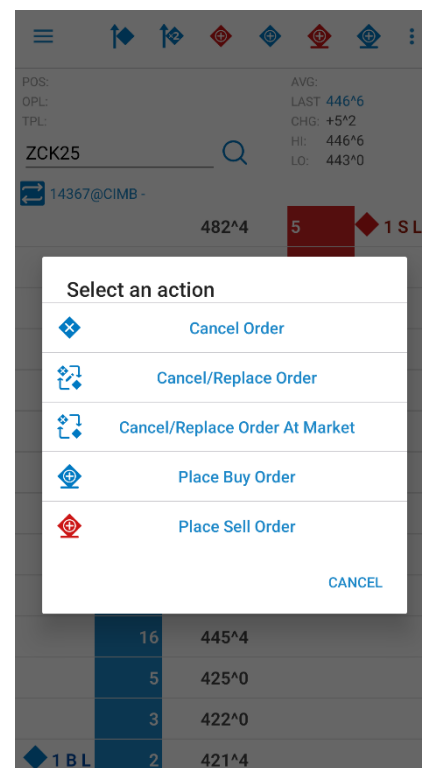
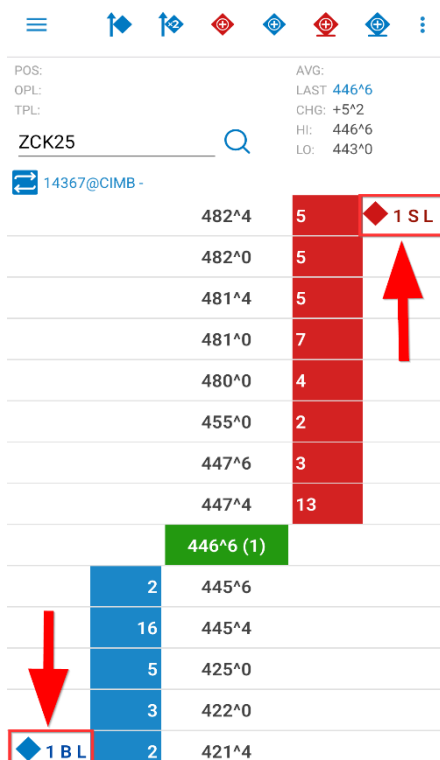
3.Full Screen Chart

- Tap on any order symbol  > tap on order description > tap desired OE action
- Double tap on any order symbol  > tap desired OE action



4.Price Ladder

- Double tap on any order symbol  > tap desired OE action



3. Full Screen Chart

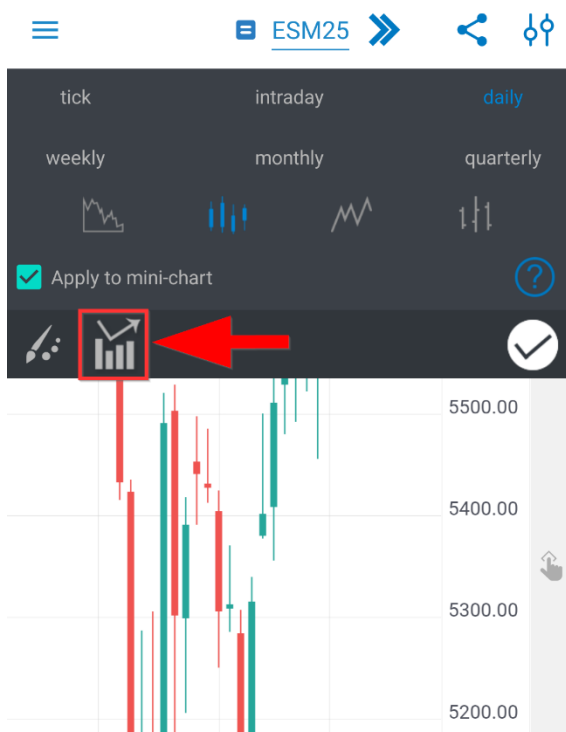
Zooming & Panning

- you can Zoom In & Out by using pinch gestures;
- use panning on time scale or price scale in order to visualize different areas of your chart;



Indicators

- Tap  > go to  to bring up a list of Indicators



Manage indicators

ATR

Average True Range

BB

Bollinger bands

BB%

Bollinger bands %B

CB_HA

Color Bar Heiken Ashi

CB_MA

Color Bar Moving Average

DMI

Directional Movement Indicator

DPO

Detrended Price Oscillator

EMA

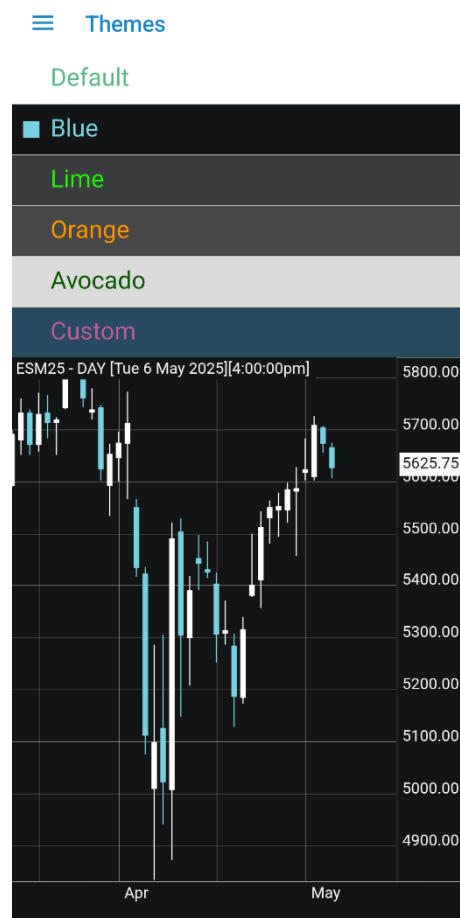
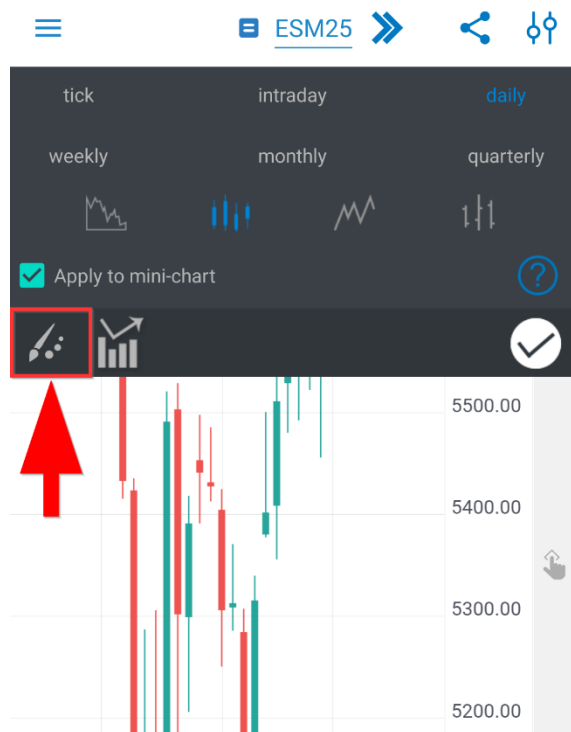
Exponential Moving Average

ENV

Envelopes

Themes

➤ Tap  > go to  to bring up a list of Themes



Help inside App

For more information to access:

➤ General > **Help** section