

WHAT'S NEW



Special instructions support

- You can now add your Special Instructions to the order in the Order Ticket and view or edit it in the Order/Position Details.

Order Ticket

16250@DEMO-PTSNR - Mobile Demo

Last Tick
5765.00

Buy 1 ESZ24 @ 5765.50 LMT

Side

BUYSELL

Instrument

ESZ24

Quantity

1

Price

5765.50

LMT

DAY

Contingency

Tap to select Contingency

Special Instructions

SPREAD +0.25

5765.00 / 5765.25

Place Order

Order Detail


CancelCXL/R CXL/R MKTChartPrice Ladder

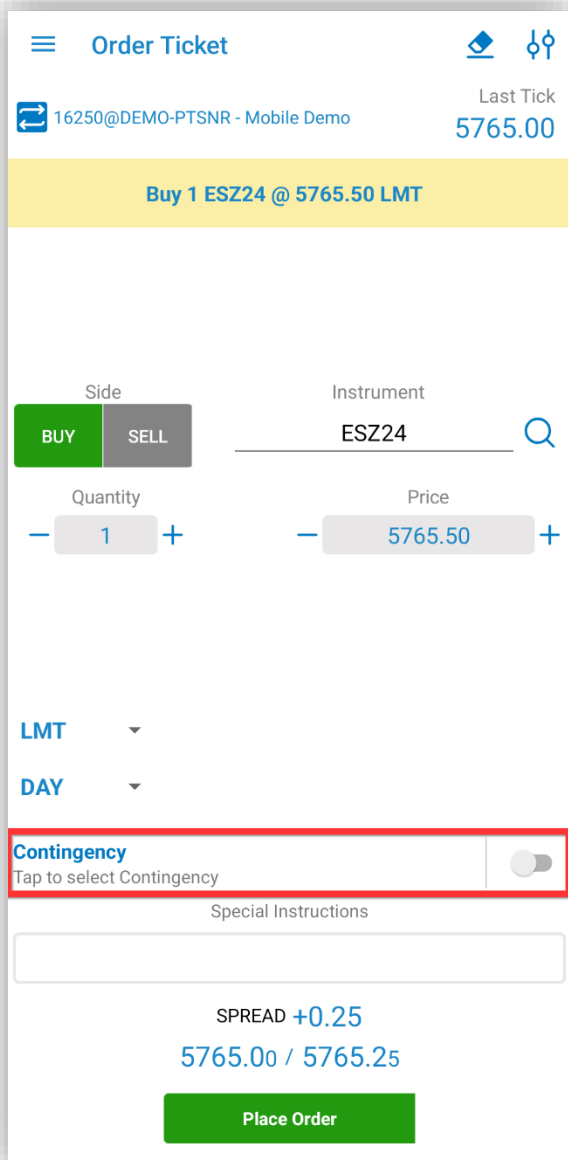
ORD. TIME	SESSION	LIFETIME	GTD
08:45:27 AM	Electronic	Day	
SIDE	QTY	INSTRUMENT	PRICE
Buy	1	ZCZ24	420^6
ORD. TYPE	ACTIVE AT		LMT. PRICE
LMT			
ACCOUNT	SALES CODE	ENTERED BY	
16250	SC-QSTME	Test101	
ORD. #	STATUS	LAST	
149140	New Order	425^0	

SPECIAL INSTRUCTIONS

This is a special instruction

Contingency support

- Timed and Iceberg contingency are supported now in the mobile app.
- You can now place an Iceberg or Timed contingency orders by pressing the button 



Order Ticket


16250@DEMO-PTSNR - Mobile Demo Last Tick 5765.00

Buy 1 ESZ24 @ 5765.50 LMT

Side: BUY SELL Instrument: ESZ24

Quantity: 1 Price: 5765.50

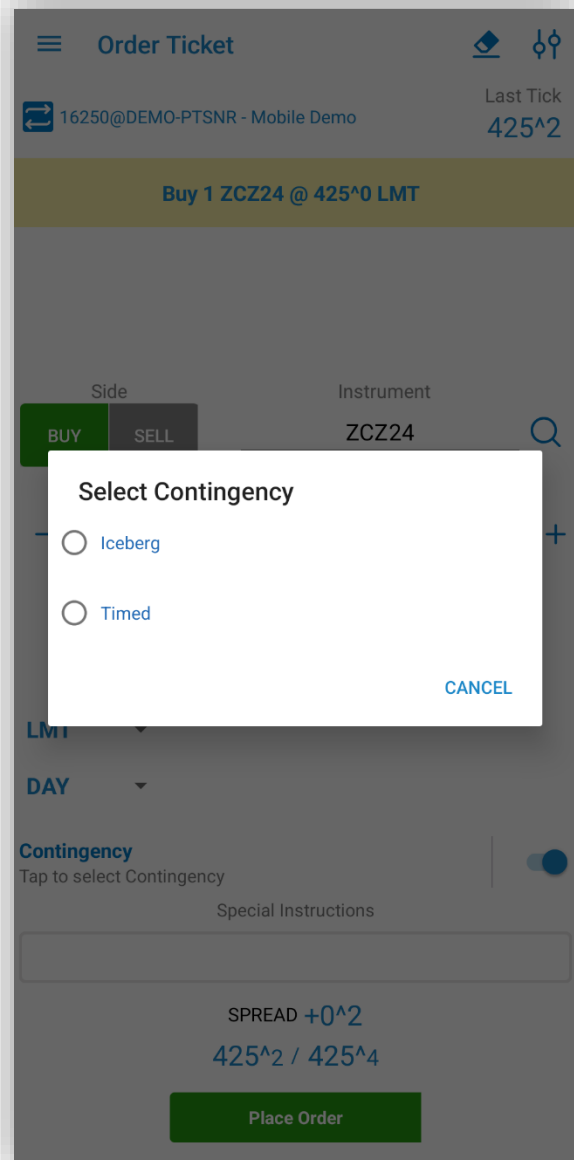
LMT DAY

Contingency Tap to select Contingency 

Special Instructions

SPREAD +0.25 5765.00 / 5765.25

Place Order



Order Ticket


16250@DEMO-PTSNR - Mobile Demo Last Tick 425^2

Buy 1 ZCZ24 @ 425^0 LMT

Side: BUY SELL Instrument: ZCZ24

Quantity: 1 Price: 425^0

LMT DAY

Contingency Tap to select Contingency 

Special Instructions

SPREAD +0^2 425^2 / 425^4

Place Order

Select Contingency

☐ Iceberg

☐ Timed

CANCEL

- Using the Timed option allows you to place suspended orders which become active at the desired time.
- Iceberg order enables the placement of a large order that is divided into smaller segments.

Order Ticket

16250@SIM1 - Mobile Demo

Last Tick
409^2

Sell 1 ZCZ24 @ 409^2 LMT (Timed)

Side

BUY SELL

Instrument

ZCZ24

Quantity

- 1 +

Price

- 409^2 +

LMT

DAY

Contingency

Timed

Activation Time

Oct 22, 2024

19:22:04 PM

Special Instructions

SPREAD +0^2

415^6 / 416^0

Place Order

Order Ticket

16250@SIM1 - Mobile Demo

Last Tick
409^2

Sell 1 (1) ZCZ24 @ 409^2 LMT (Iceberg)

Side

BUY SELL

Instrument

ZCZ24

Quantity

- 1 +

Price

- 409^2 +

LMT

DAY

Contingency

Iceberg

Incremental Quantity

- 1 +

Special Instructions

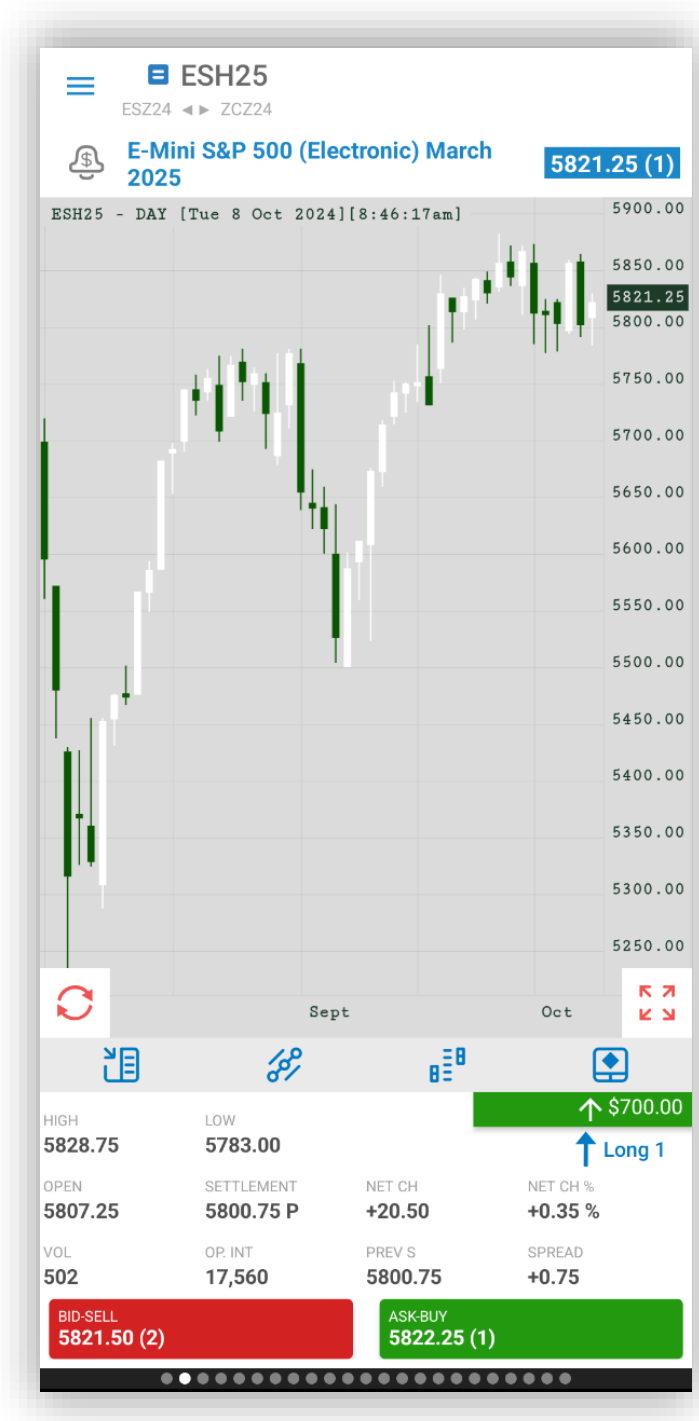
SPREAD +0^2

415^6 / 416^0

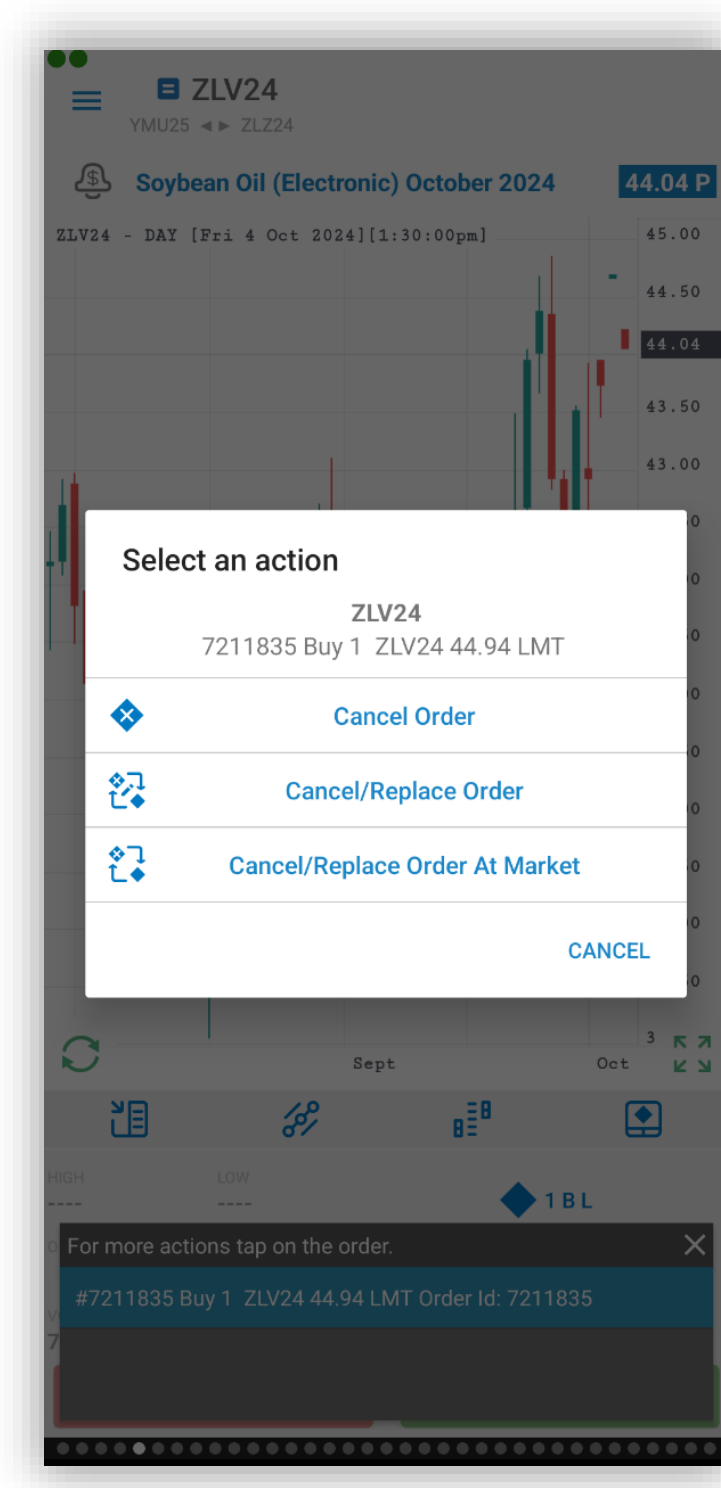
Place Order

Quote Details


- You can now view all portfolio information related to the selected instrument within the Quote Detail section.

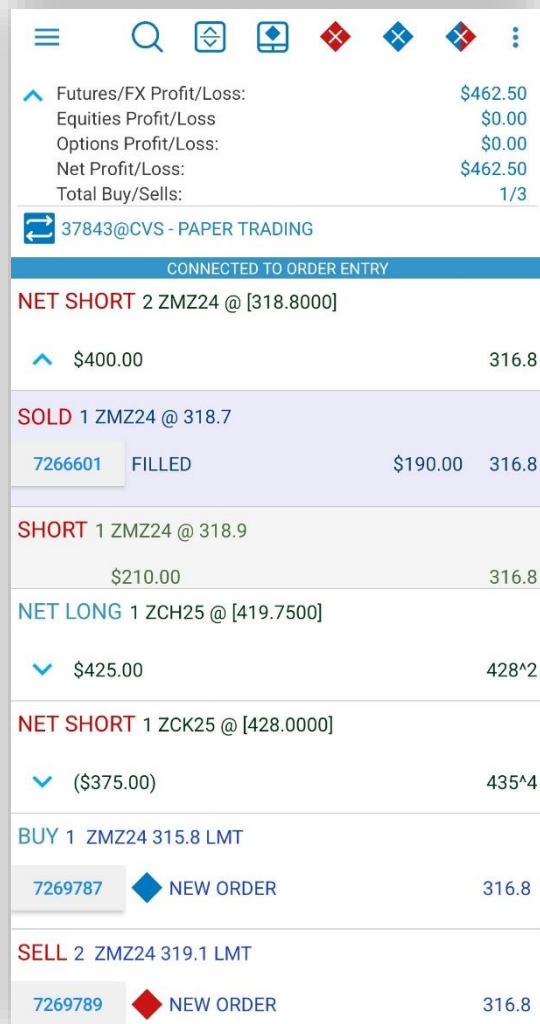


- Order Entry actions are also available when tapping on the order/position

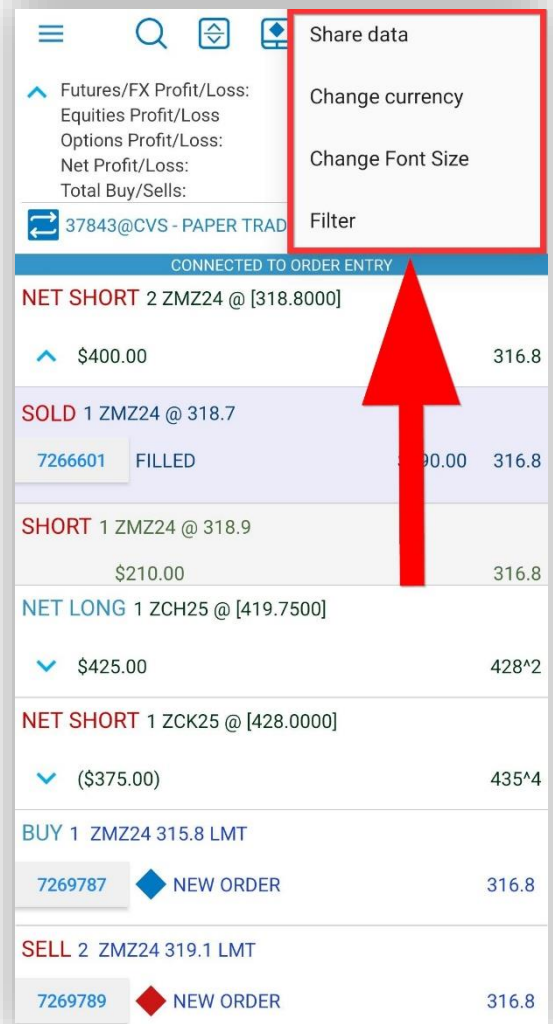


Orders and Positions

- The order of actions has been adjusted, with the Order Ticket and Currency button having swapped positions.
- The Currency button as well as other actions. can be reached by pressing the  button.



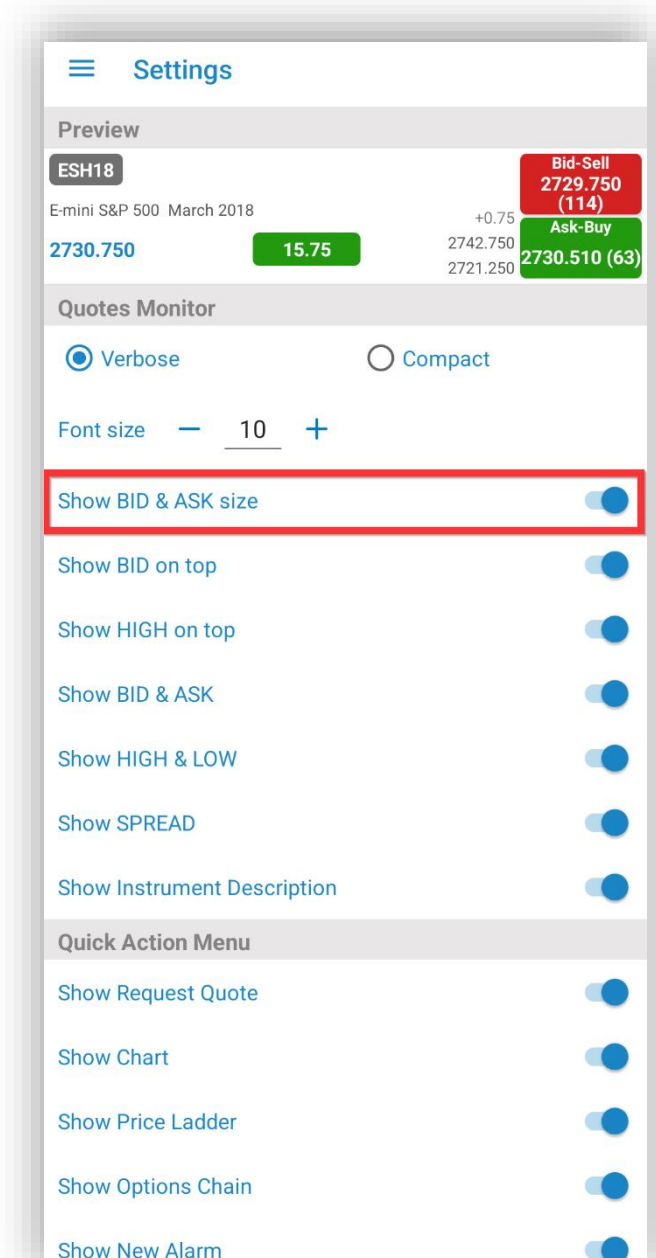
Futures/FX Profit/Loss:		\$462.50
Equities Profit/Loss:		\$0.00
Options Profit/Loss:		\$0.00
Net Profit/Loss:		\$462.50
Total Buy/Sells:		1/3
37843@CVS - PAPER TRADING		
CONNECTED TO ORDER ENTRY		
NET SHORT 2 ZMZ24 @ [318.8000]		
▲	\$400.00	316.8
SOLD 1 ZMZ24 @ 318.7		
7266601	FILLED	\$190.00 316.8
SHORT 1 ZMZ24 @ 318.9		
	\$210.00	316.8
NET LONG 1 ZCH25 @ [419.7500]		
▼	\$425.00	428^2
NET SHORT 1 ZCK25 @ [428.0000]		
▼	(\$375.00)	435^4
BUY 1 ZMZ24 315.8 LMT		
7269787	NEW ORDER	316.8
SELL 2 ZMZ24 319.1 LMT		
7269789	NEW ORDER	316.8



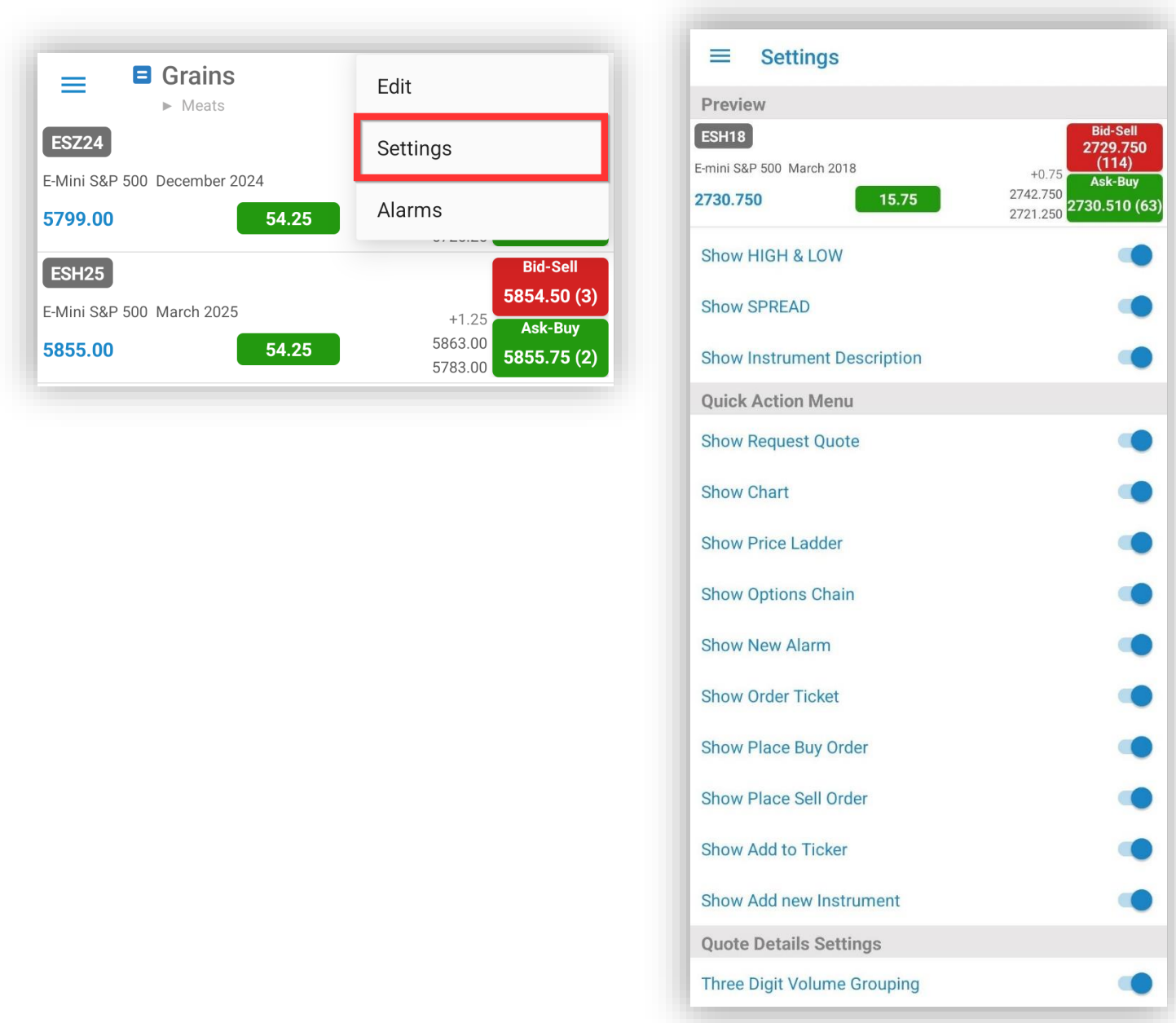
Futures/FX Profit/Loss:		\$462.50
Equities Profit/Loss:		\$0.00
Options Profit/Loss:		\$0.00
Net Profit/Loss:		\$462.50
Total Buy/Sells:		1/3
37843@CVS - PAPER TRADING		
CONNECTED TO ORDER ENTRY		
NET SHORT 2 ZMZ24 @ [318.8000]		
▲	\$400.00	316.8
SOLD 1 ZMZ24 @ 318.7		
7266601	FILLED	\$190.00 316.8
SHORT 1 ZMZ24 @ 318.9		
	\$210.00	316.8
NET LONG 1 ZCH25 @ [419.7500]		
▼	\$425.00	428^2
NET SHORT 1 ZCK25 @ [428.0000]		
▼	(\$375.00)	435^4
BUY 1 ZMZ24 315.8 LMT		
7269787	NEW ORDER	316.8
SELL 2 ZMZ24 319.1 LMT		
7269789	NEW ORDER	316.8

Quote Monitor Settings

- You can now show or hide the Bid & Ask size from the Quotes Monitor Settings.
- To do so, in the Quotes Monitor screen tap the Settings icon and then go to Properties

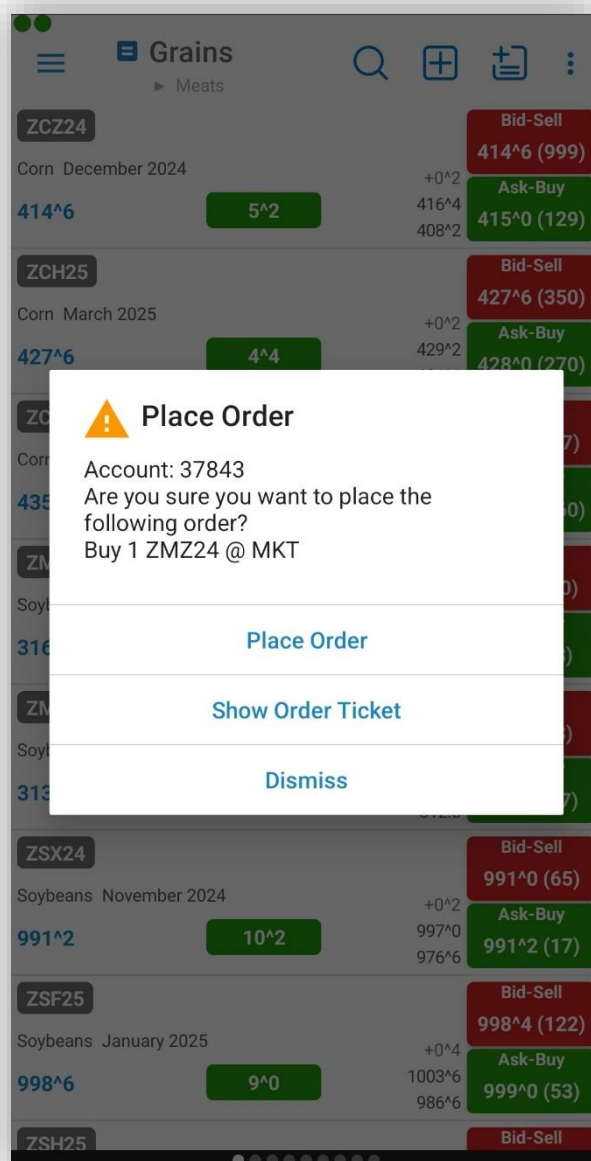
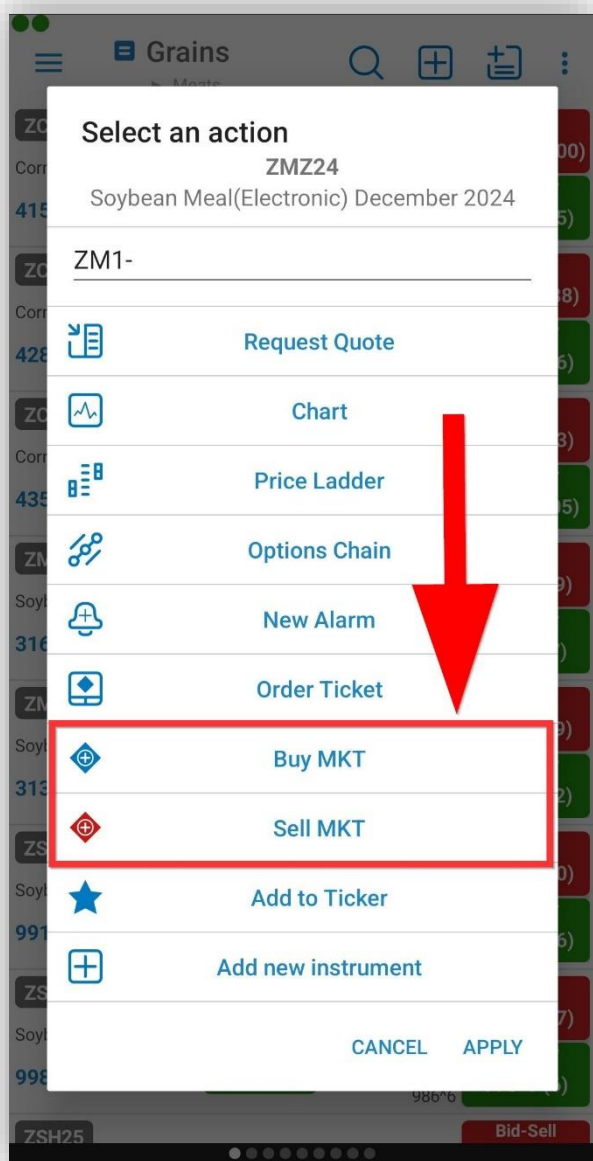


- Now you can customize the Quotes Monitor Quick Action Menu




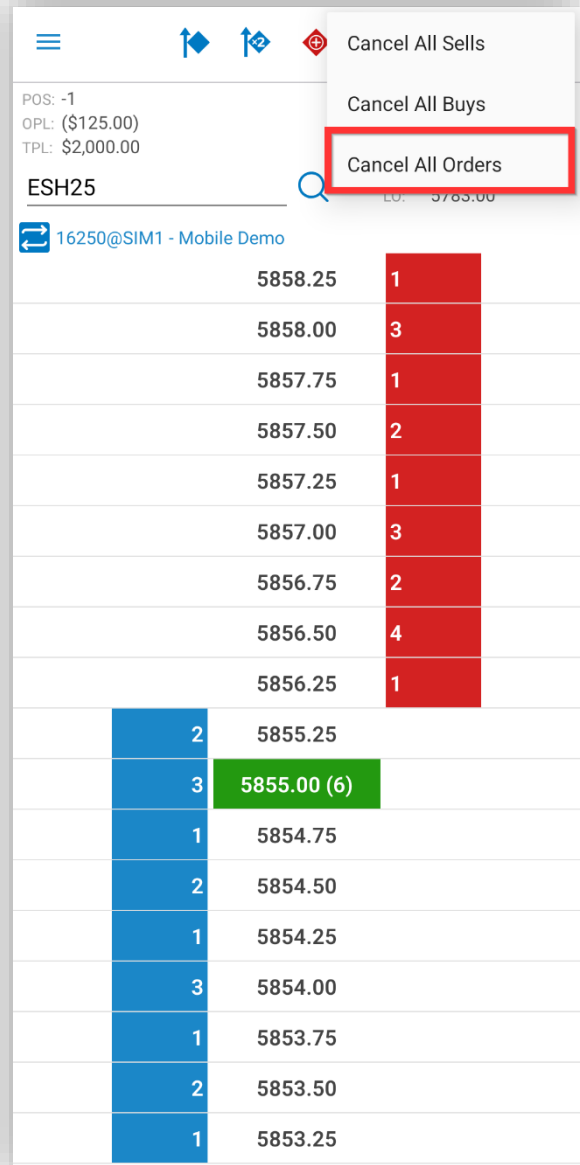
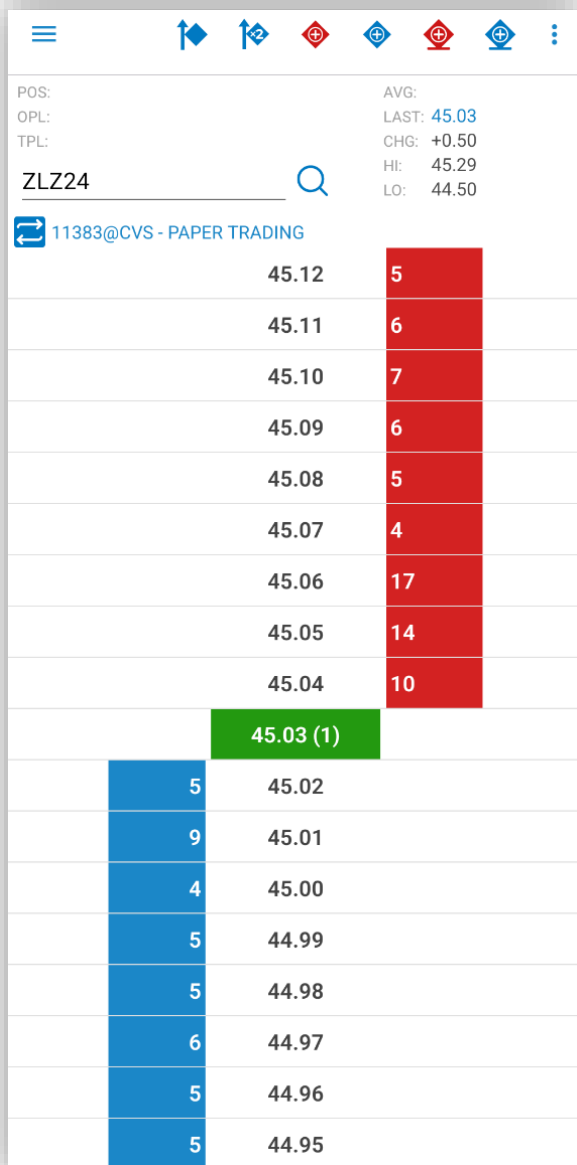
Quick Action Menu

- You can now place an order at market with the quantity of 1 from the Quick Action Menu.
- If you want to change the quantity, select Show Order Ticket, and edit the quantity to the desired value.



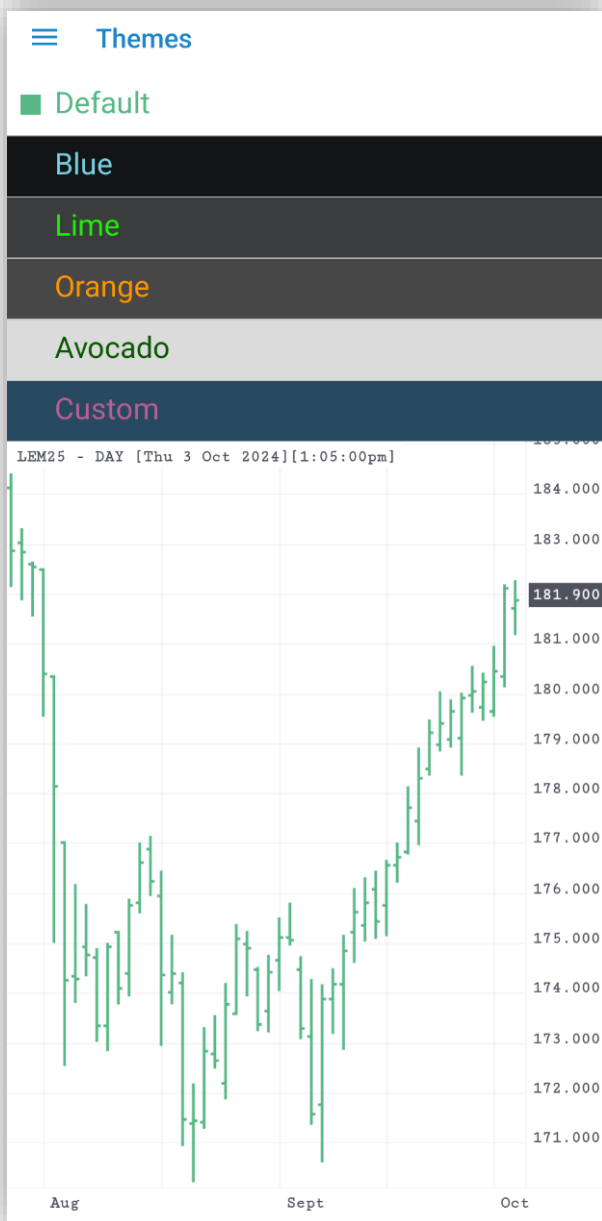
Price Ladder


- The Price Ladder design has been updated
- Cancel All Orders functionality has been added to the Price Ladder screen – just tap on the button  and select the desired action

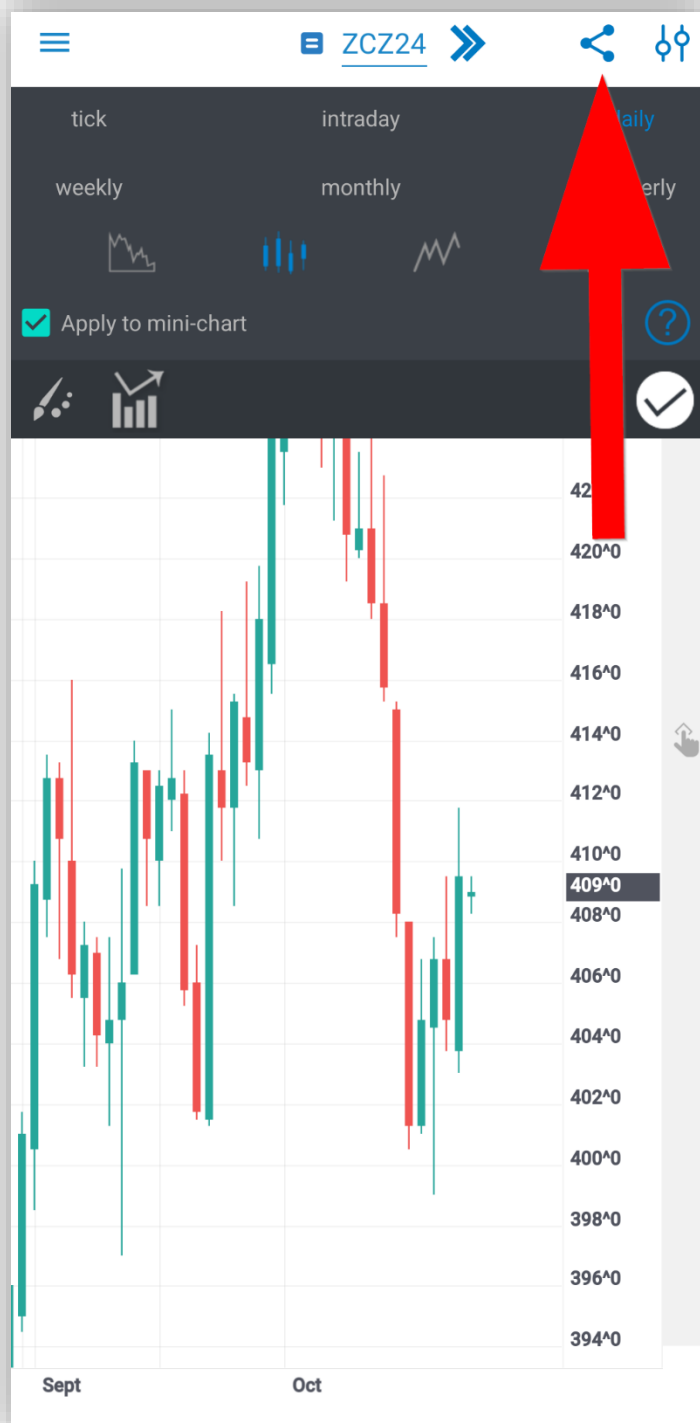


Chart


- There is a new chart theme available, it is labeled “Default”
- You can now navigate between charts by pressing the left or right arrow buttons located on the top of the Full Screen Chart




- The Full Screen Chart can now be shared as a PDF pressing the Share button 





Login Screen

- The password can now temporarily be displayed on the login screen by pressing the Show/Hide button 

[Forgot your password](#)[Getting Started](#)

 Test101

 PASSWORD

☒ Load settings from server

Quotes Monitor & Orders and Positions

- The Quotes Monitor and Orders and Positions icons have a new design.

