

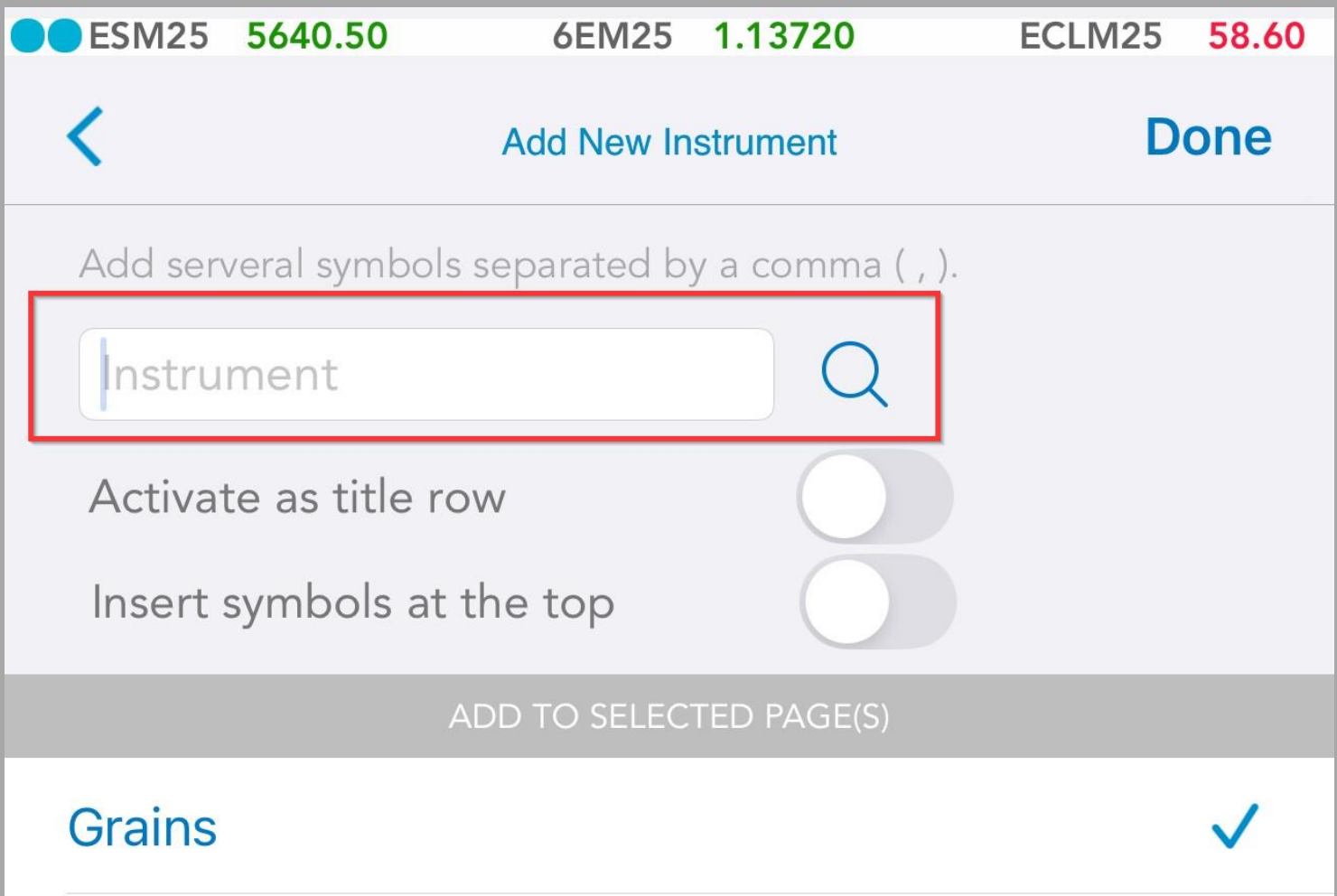
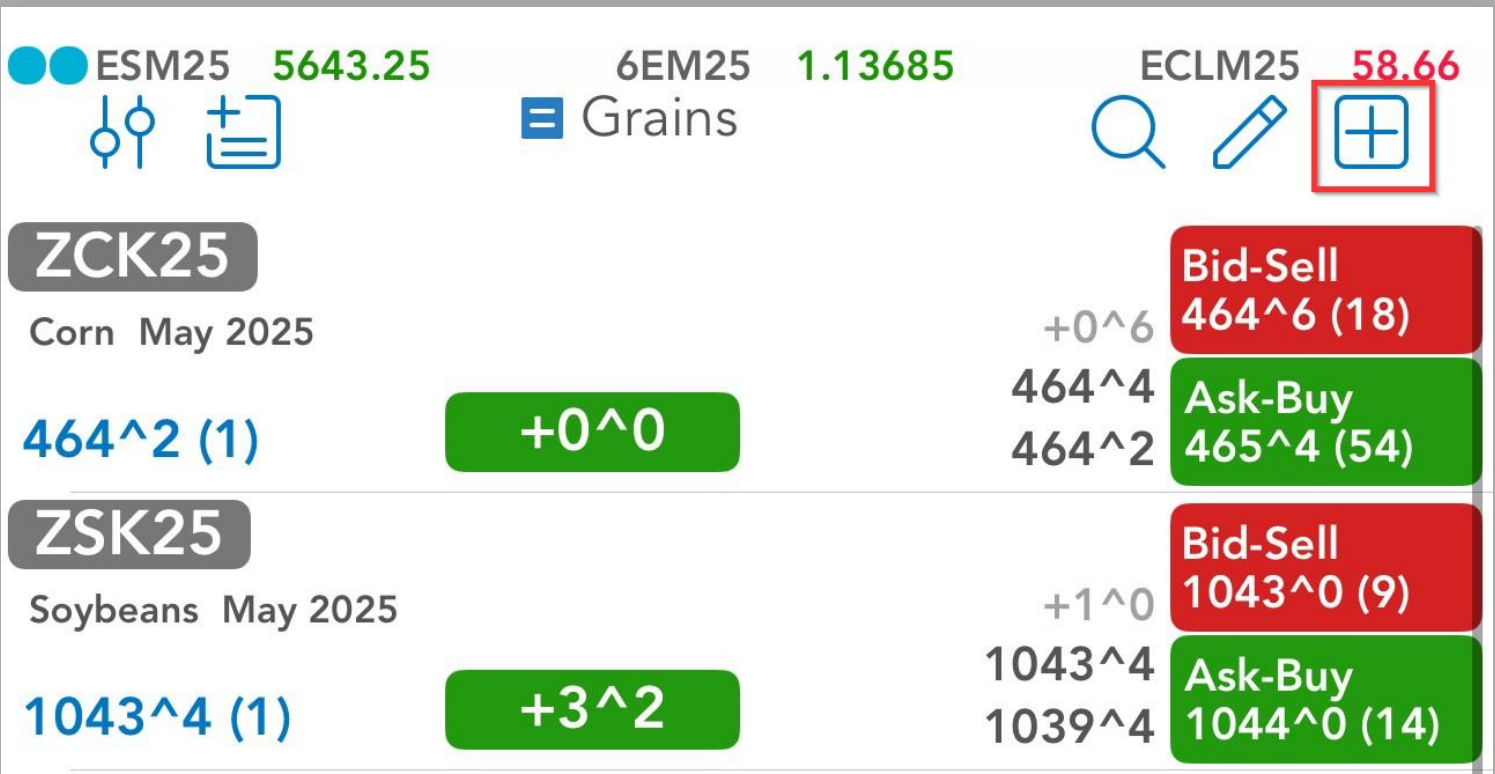
QUICK START

1. Add your quotes

After you log-in, you will be automatically redirected to the **Quotes Monitor Screen**

1.1. Quick Add Quotes

Tap  >type instrument name >tap  >
>tap **Done**





The screenshot shows the 'Add New Instrument' screen with the following elements:

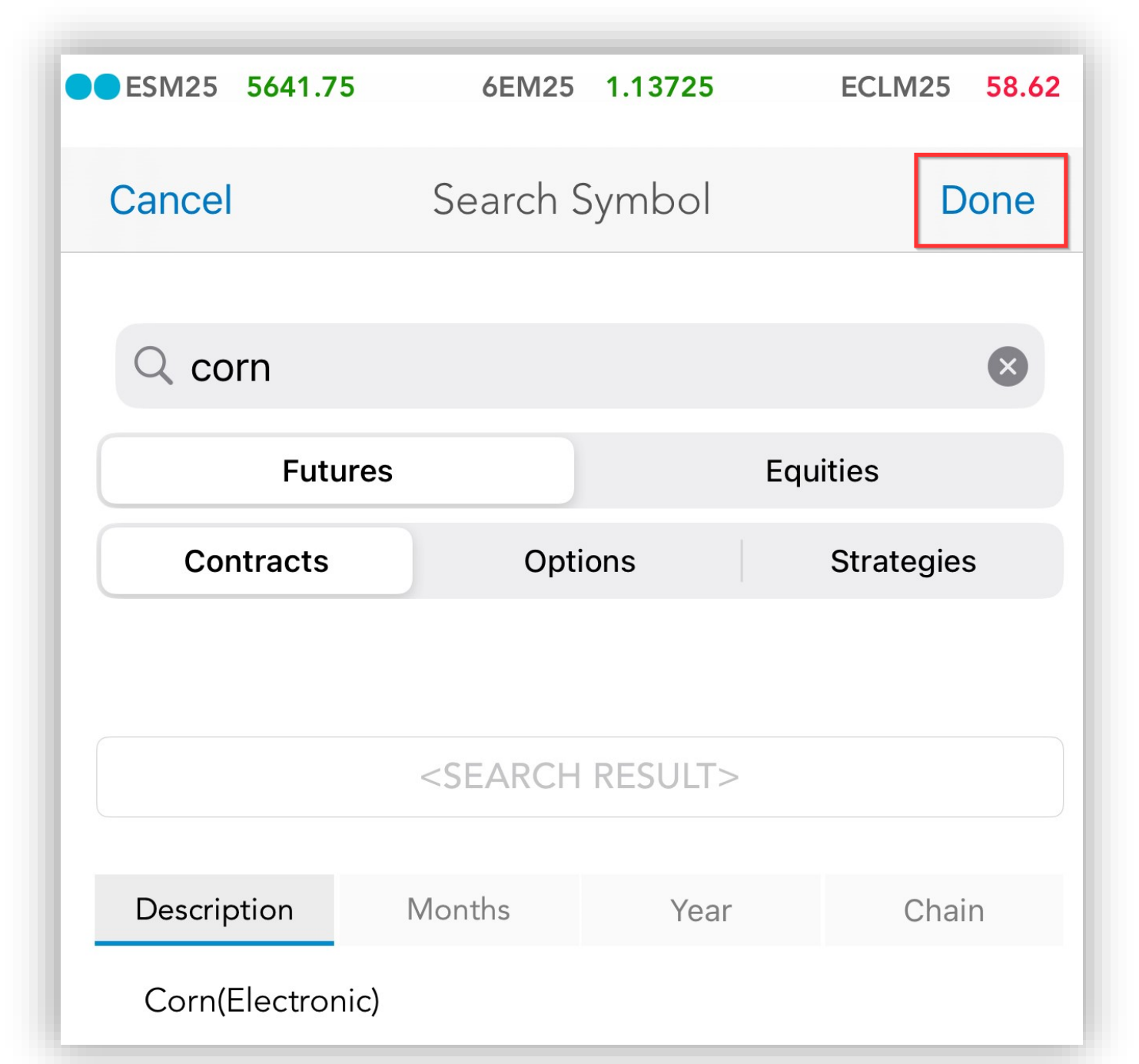
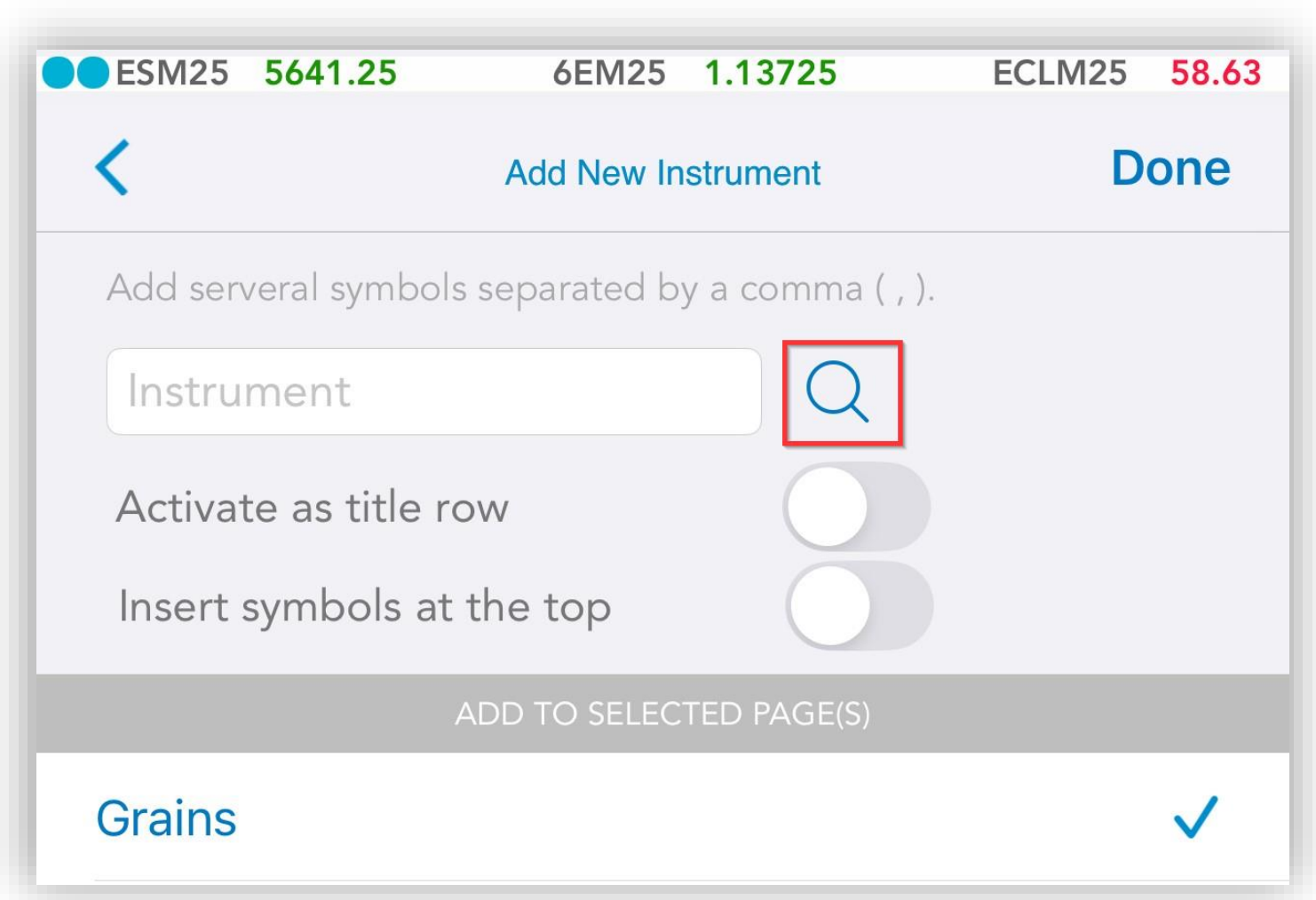
- Header: Back arrow, 'Add New Instrument', and 'Done' button.
- Text: 'Add several symbols separated by a comma (,).'
- Input field: A text box labeled 'Instrument' with a magnifying glass icon to its right, highlighted with a red box.
- Toggle switches: 'Activate as title row' and 'Insert symbols at the top'.
- Footer: 'ADD TO SELECTED PAGE(S)' and a table with the following data:

Instrument	Symbol	Price	Change	Bid-Sell	Ask-Buy
Grains					

A blue checkmark is visible in the bottom right corner of the table.

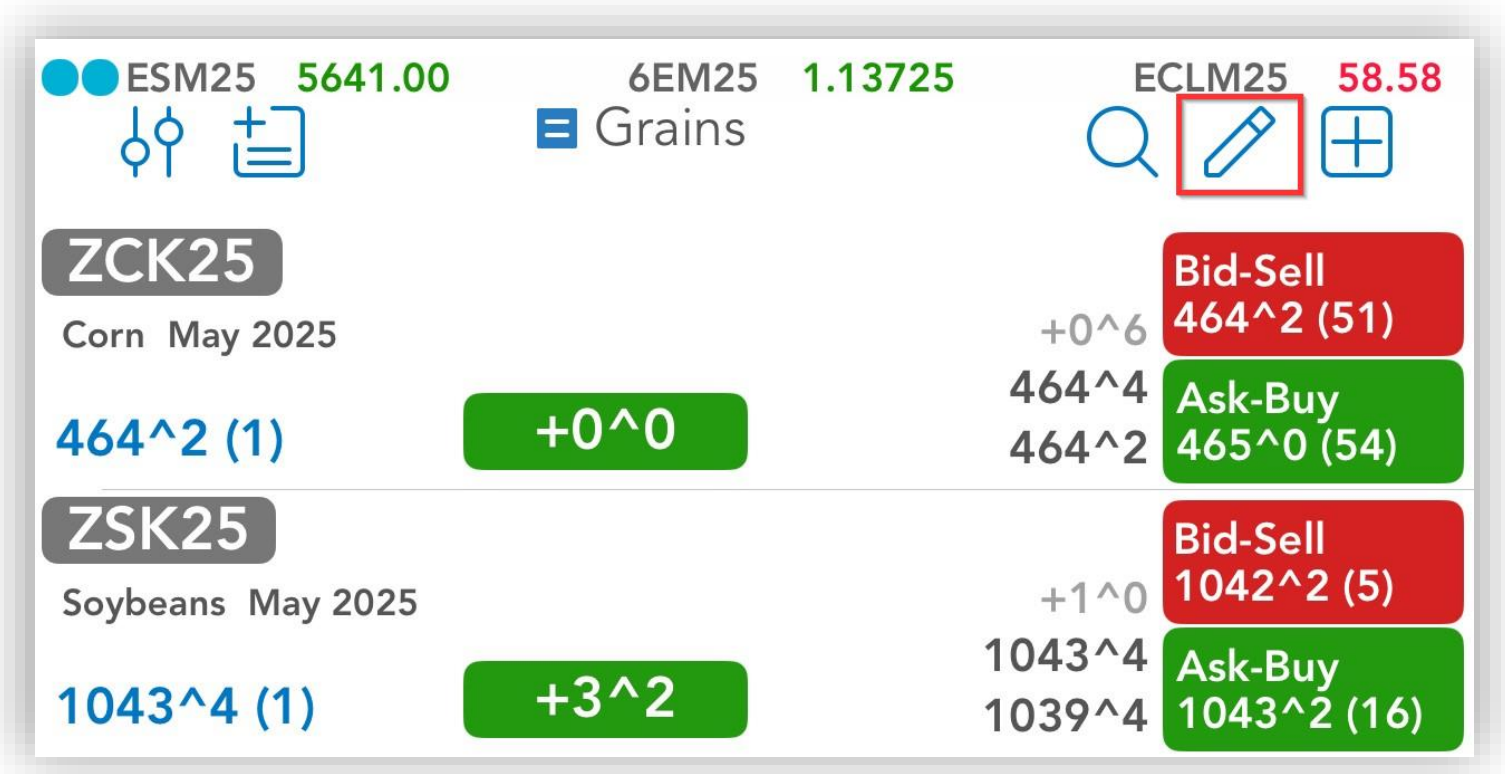
1.2. Add quotes using Symbol Search

Tap  > Tap  > search instrument > tap **Done**

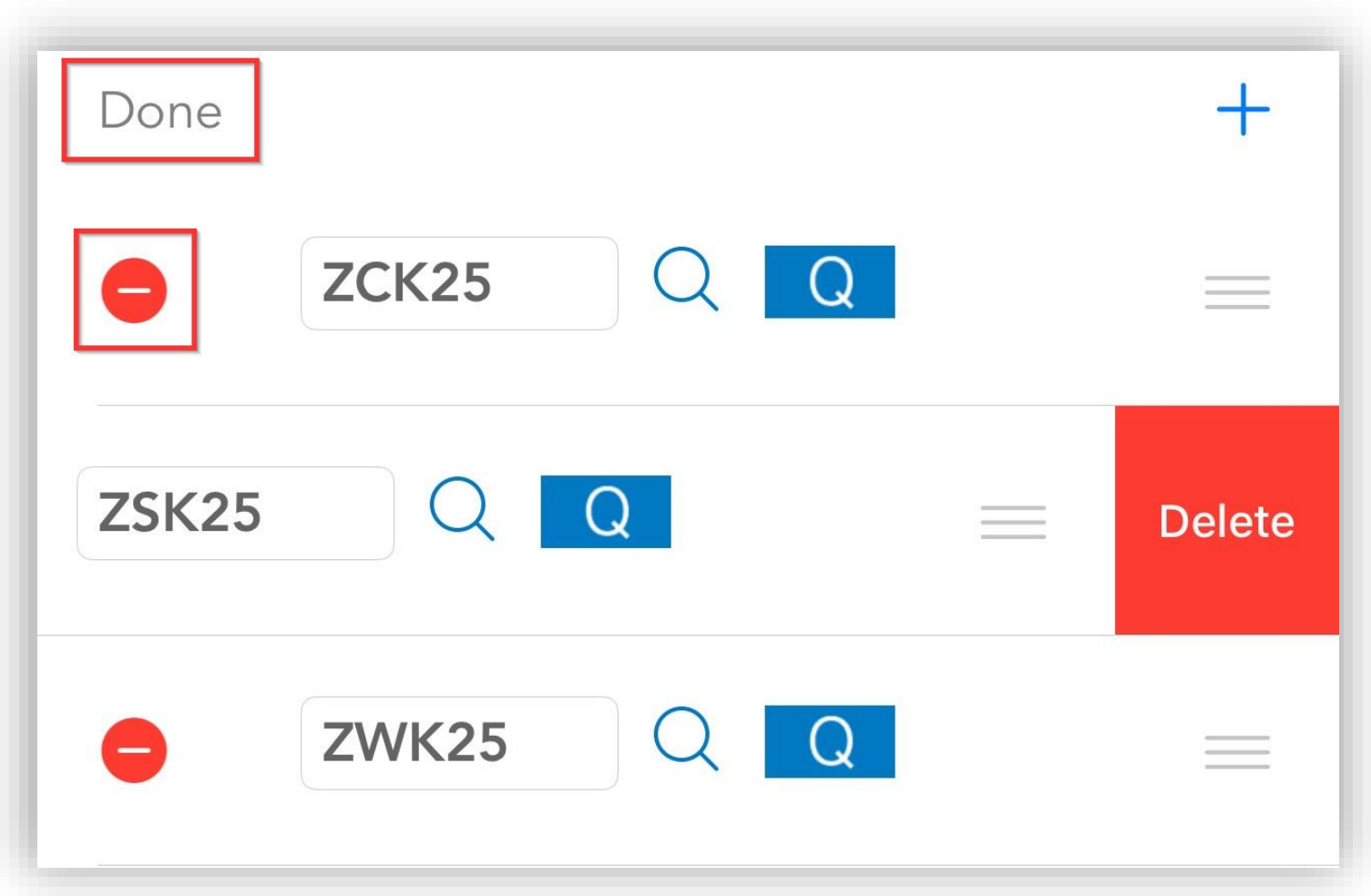


1.3. Edit/Delete Quotes

Tap  > edit instrument(s) > tap **Done**

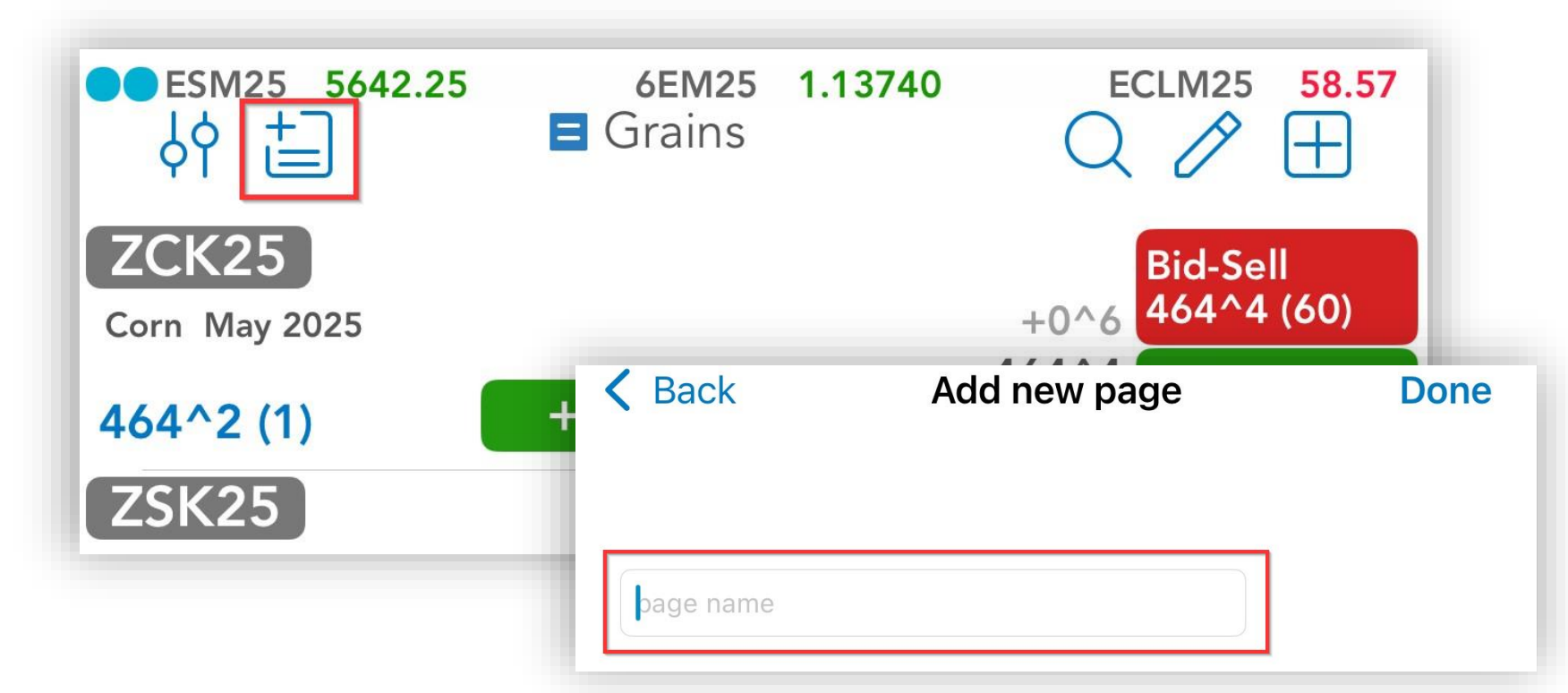


Tap  > **Delete** > tap **Done**




1.4. Create page

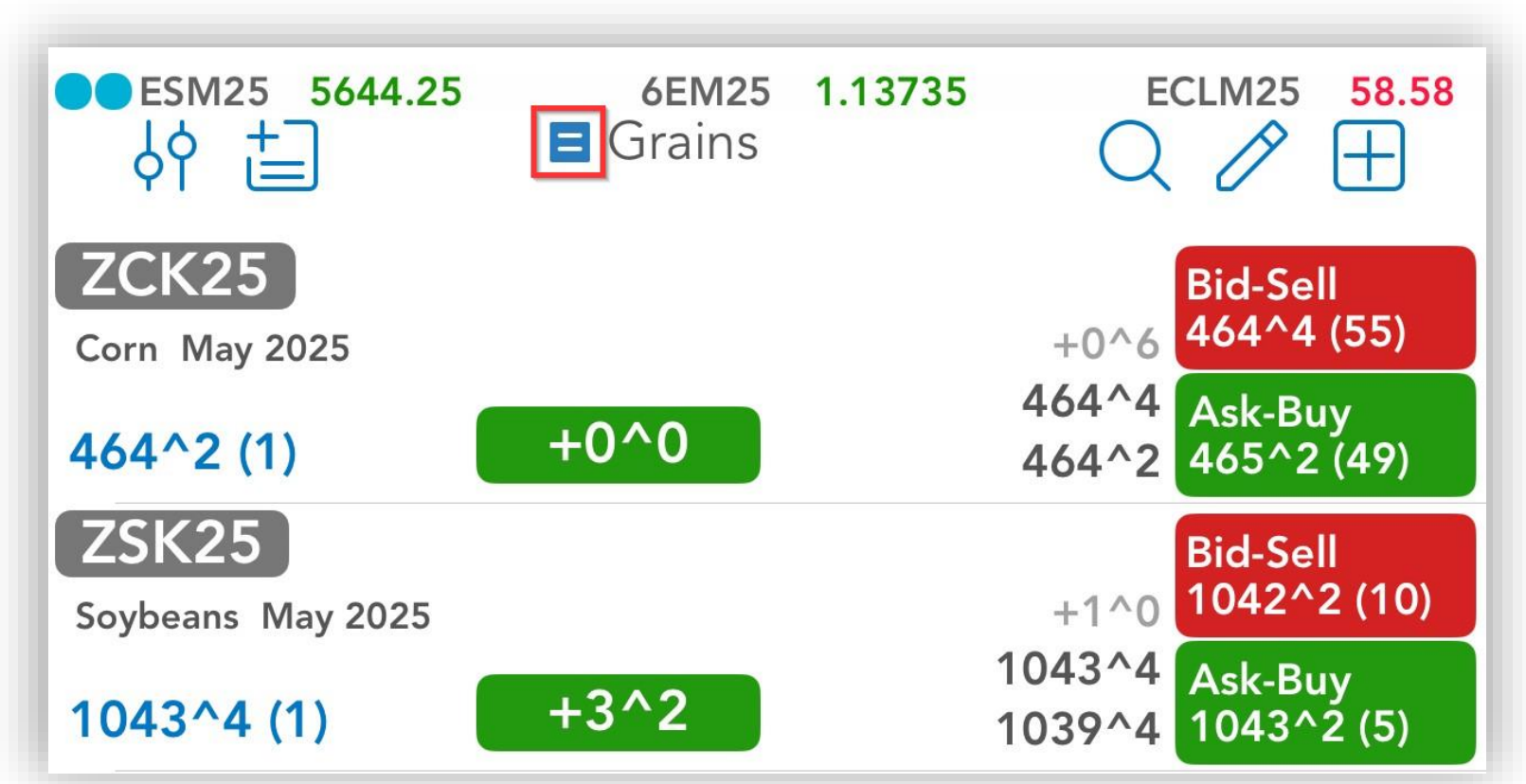
Tap  > type “page name” > tap **Done**



1.5. Edit/Delete Pages

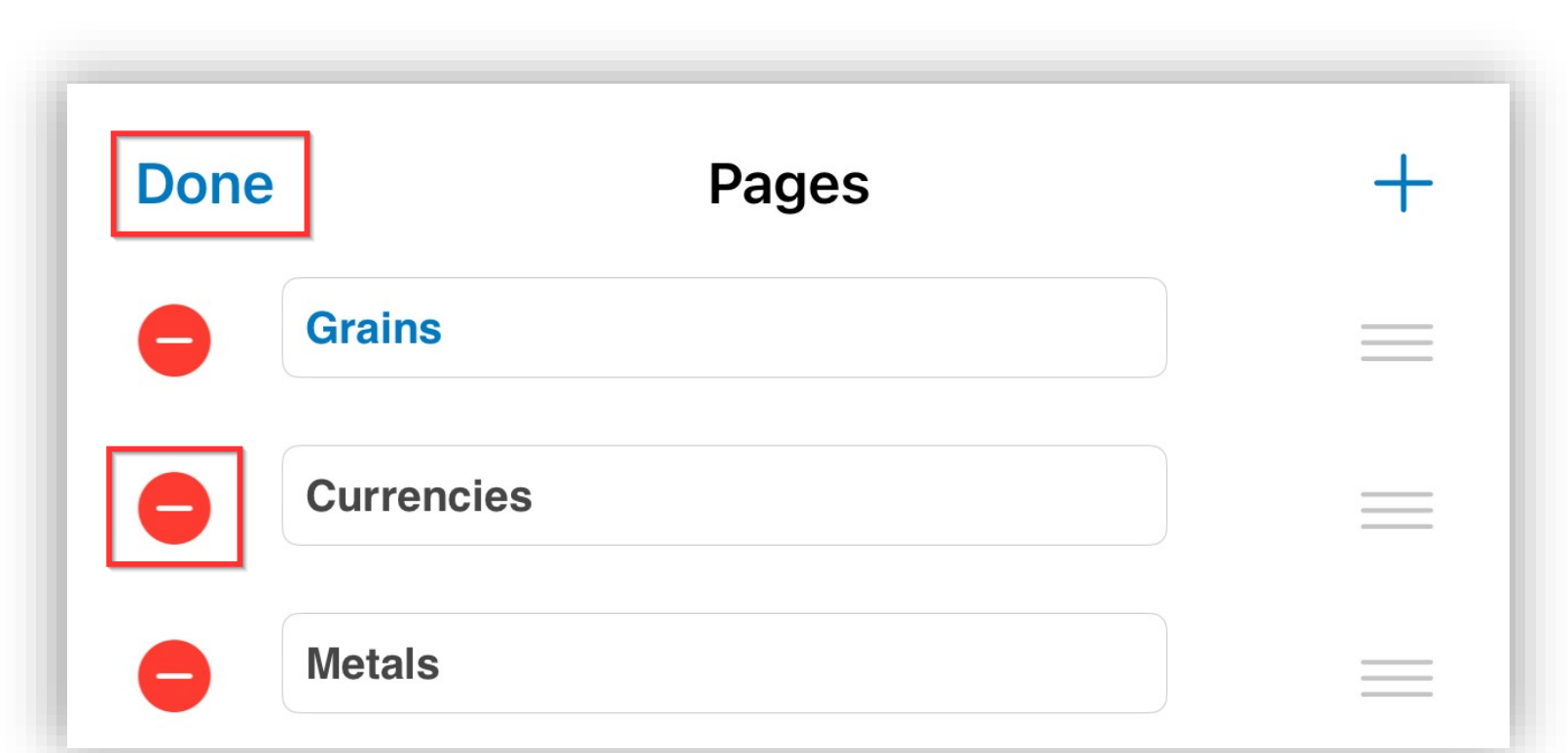
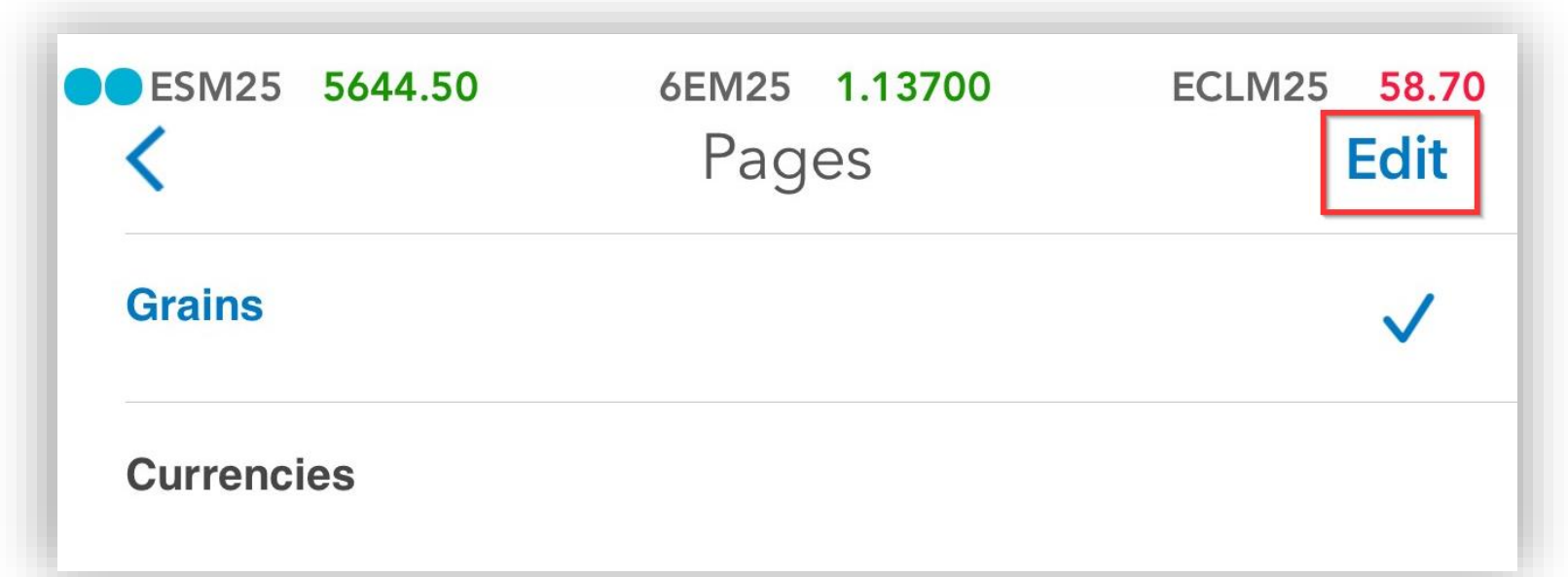
Edit page:

Tap  to bring up a list of existing pages > **Edit**
> edit page name > tap **Done**



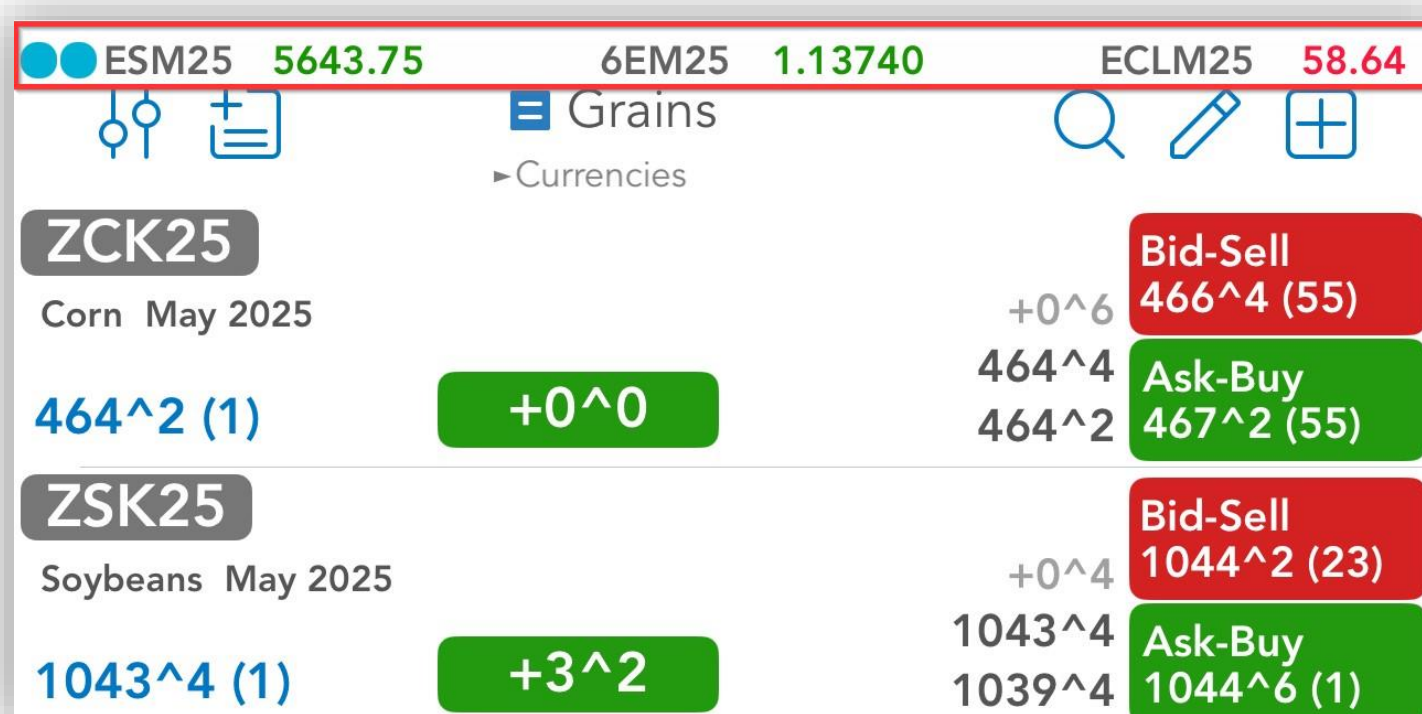
Delete page:

Tap  > **Delete** > tap **Done**



2. Add to Ticker

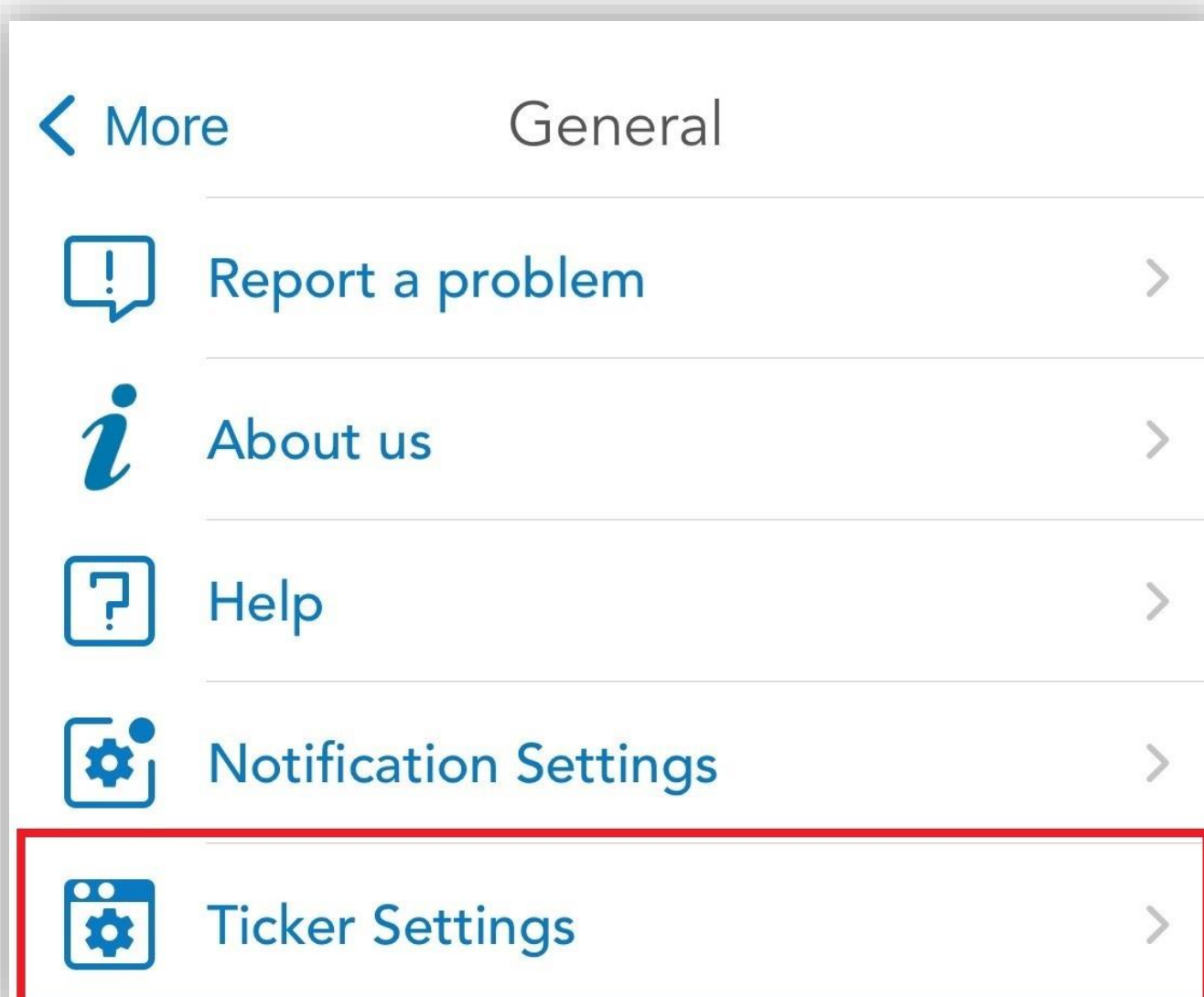
- You can monitor your favorite quotes in a **Ticker** view available at the top of the Application.



The screenshot displays the Ticker view at the top of the application. It features a header with three selected quotes: ESM25 at 5643.75, 6EM25 at 1.13740, and ECLM25 at 58.64. Below the header, there are two main sections for ZCK25 (Corn May 2025) and ZSK25 (Soybeans May 2025). Each section shows the current price, a change indicator (e.g., +0^6 for ZCK25), and a table of Bid-Sell and Ask-Buy orders with their respective volumes. The ZCK25 section shows a Bid-Sell order at 466^4 (55) and an Ask-Buy order at 467^2 (55). The ZSK25 section shows a Bid-Sell order at 1044^2 (23) and an Ask-Buy order at 1044^6 (1).

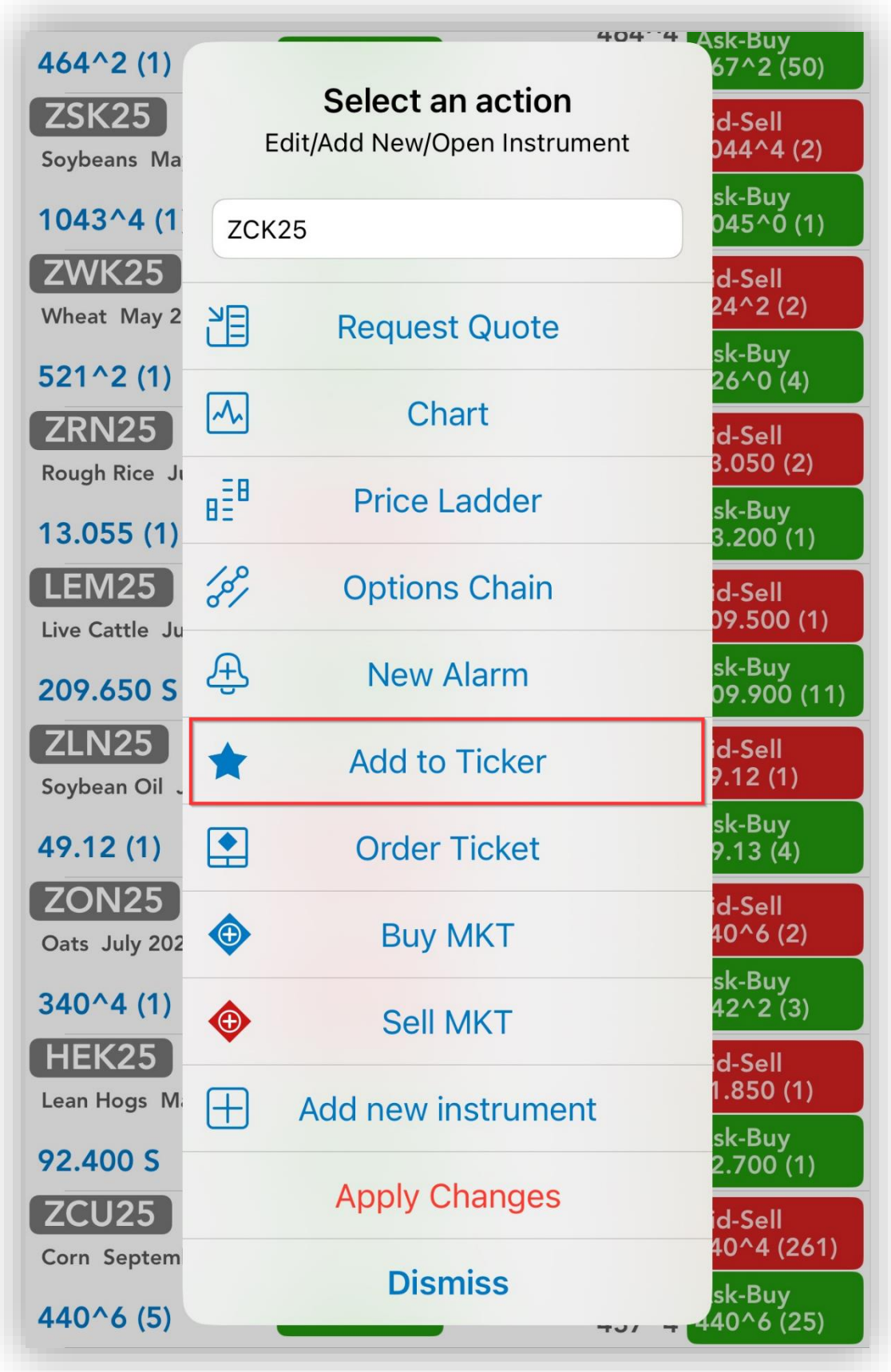
Contract	Price	Change	Bid-Sell	Ask-Buy
ESM25	5643.75			
6EM25	1.13740			
ECLM25	58.64			
ZCK25 (Corn May 2025)	464^2 (1)	+0^6	466^4 (55)	467^2 (55)
ZSK25 (Soybeans May 2025)	1043^4 (1)	+3^2	1044^2 (23)	1044^6 (1)

- Your favorite quotes can be edited from:
> **General** > **Ticker Settings** > **Edit Your Favorite Quotes**

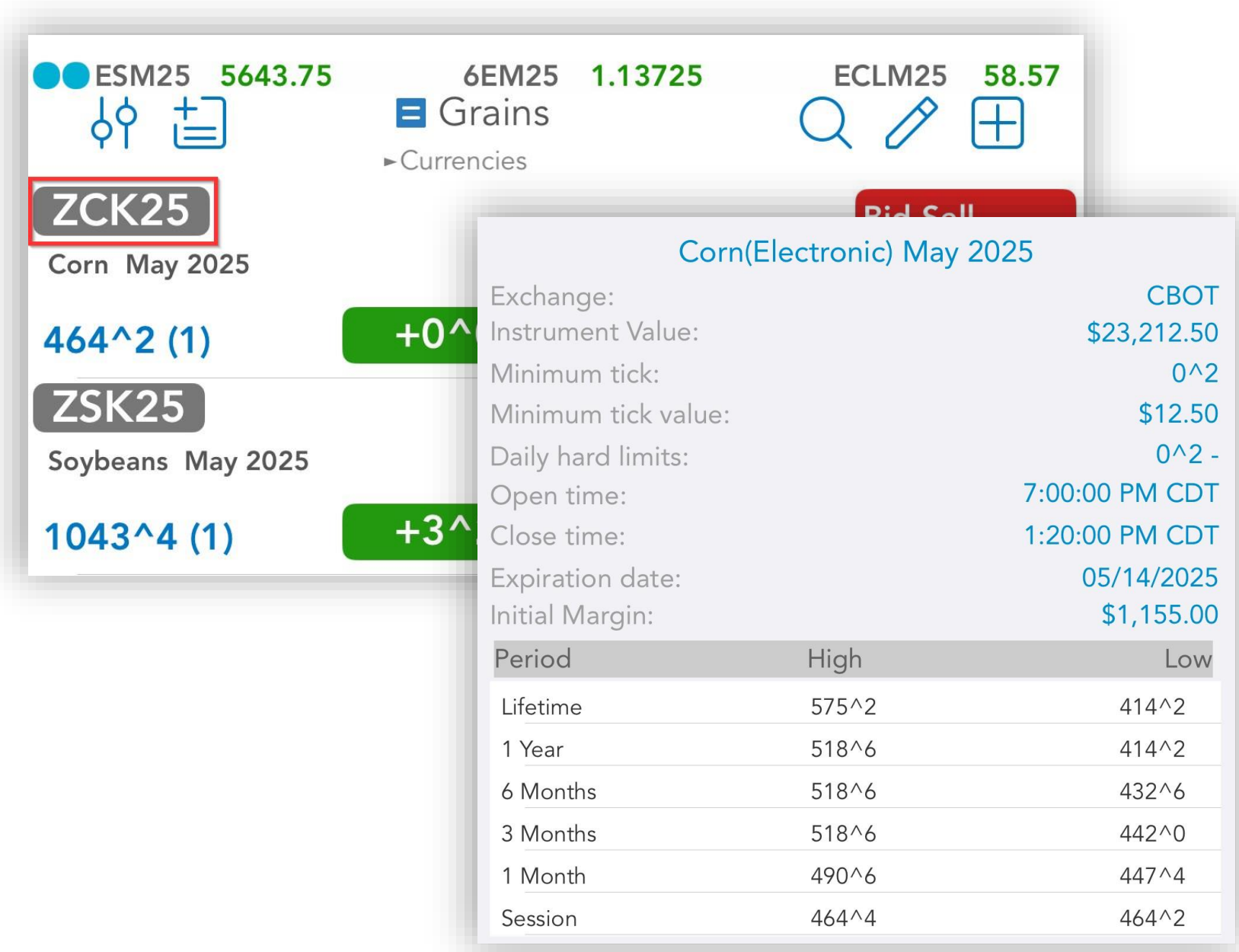


- You can quickly add any quote to your **Ticker** using the **Quick Action Menu** from **Quotes Monitor**

- The **Quick Action Menu** is revealed at a long tap on any quote



- Tap on **instrument** to bring up **Instrument Details**



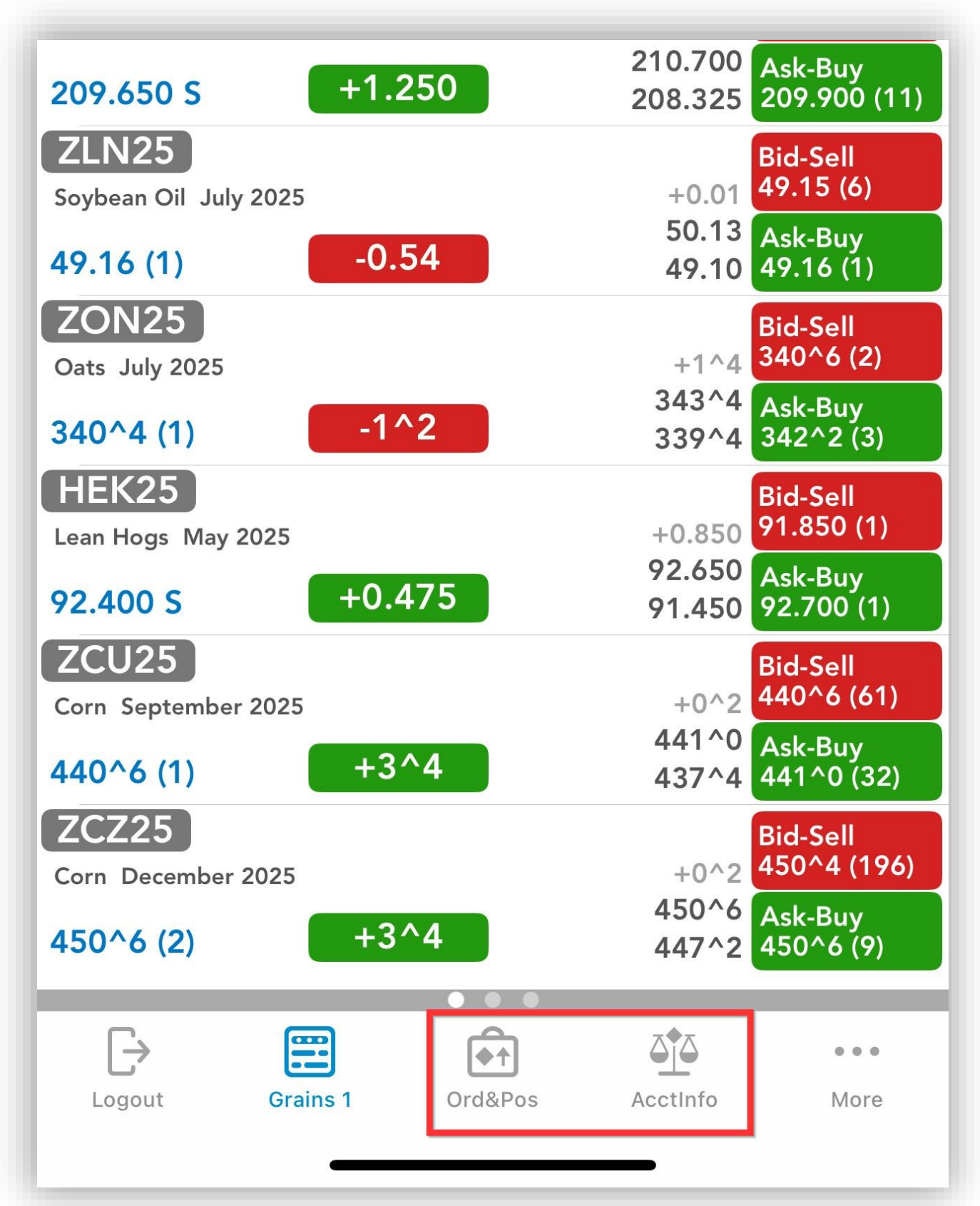
3. Visualize your portfolio

3.1. Orders & Positions Monitor

- You can access the **Orders & Positions** section either from the vertical menu or tab bar menu, depending on which menu design you have chosen

3.1. Account Information

- You can access **Account Information** section either from the vertical menu or tab bar menu, depending on which menu design you have chosen



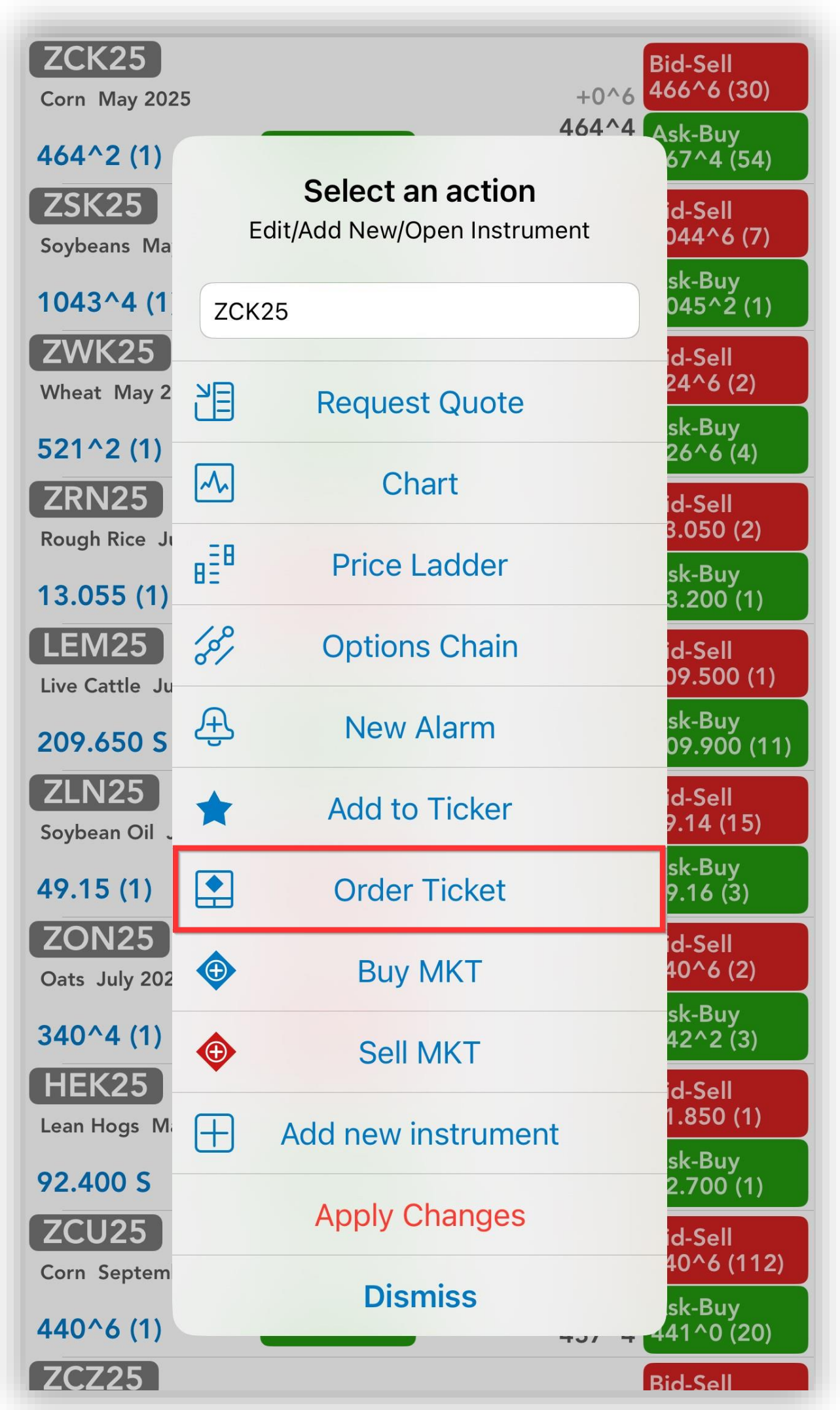
4. Start Trading

How to use Order Ticket


You can access **Order Ticket** from the following screens:

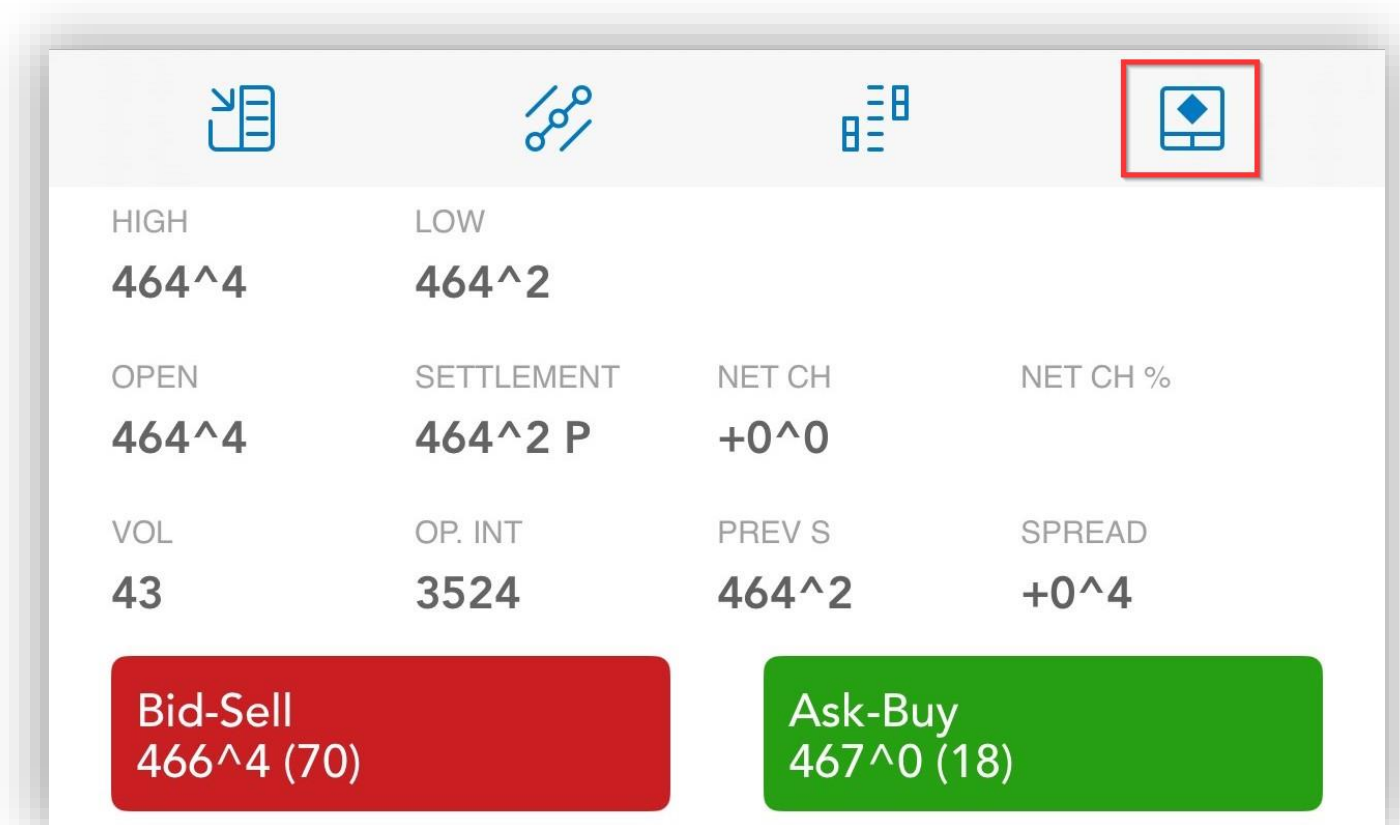
4.1. Quotes Monitor's Quick Action Menu

Quotes Monitor Screen > Long tap on any Quote > **Order Ticket**




4.2. Quote Details

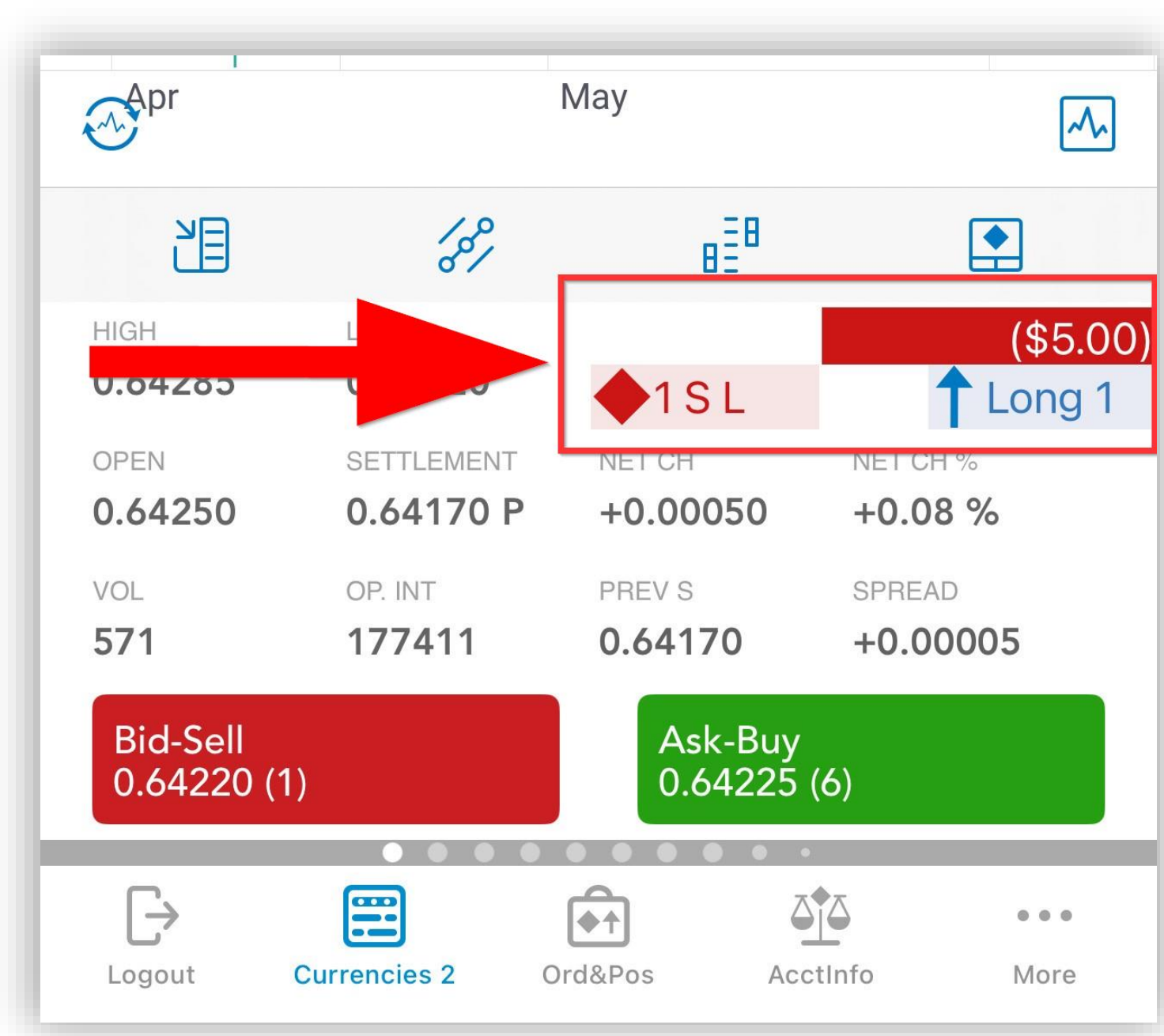
Quotes Monitor Screen > tap on any Quote
> tap the Trade button 




You can also trade by tapping the Buy or Sell buttons.

On the right side of Low, just under the Trade button  you can see your orders and positions.


Tap on them to interact.



Price Ladder

Quotes Monitor Screen > tap on any Quote
> tap Price Ladder  > tap on a Price Ladder row

4.3. Full Screen Chart

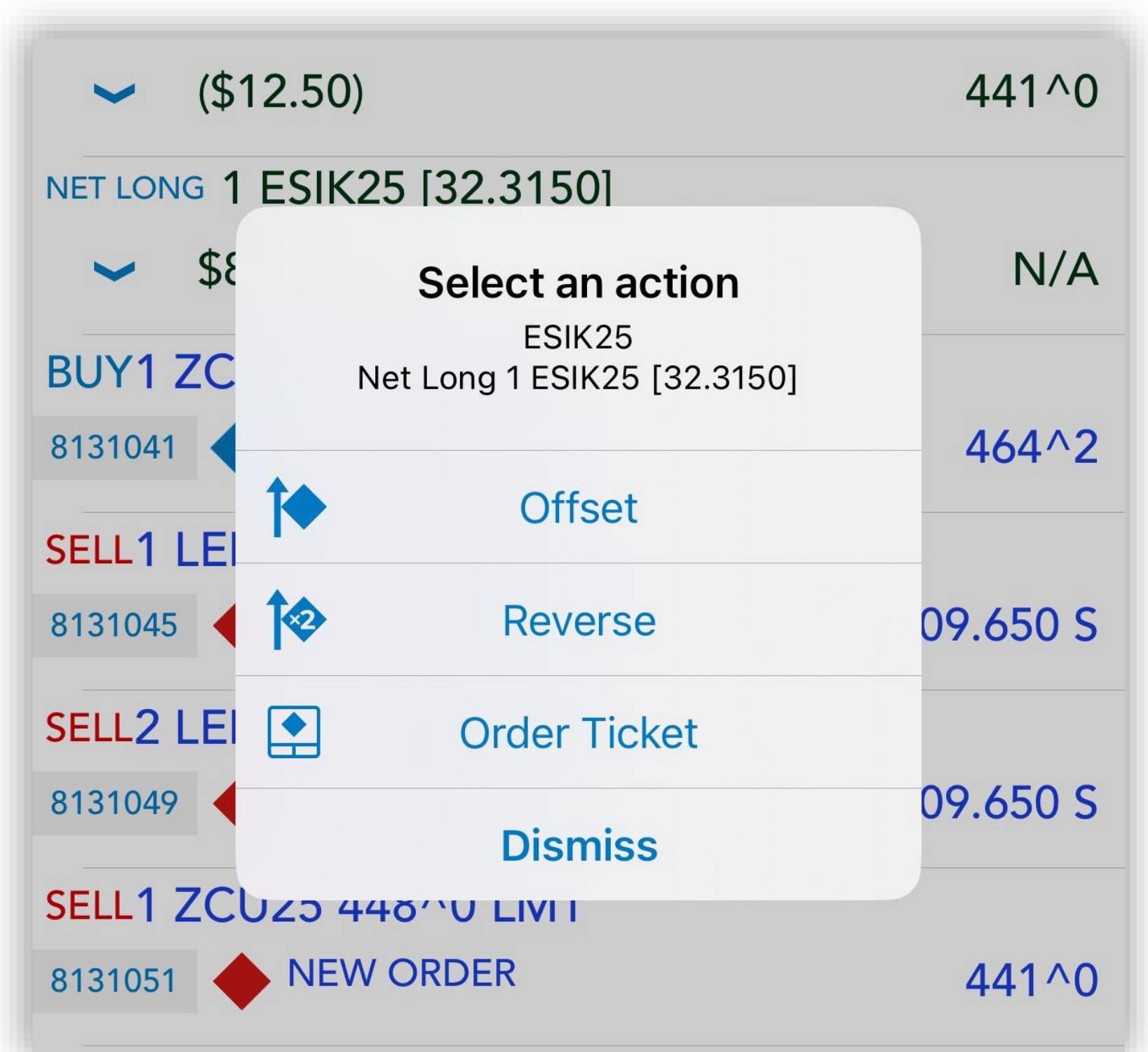
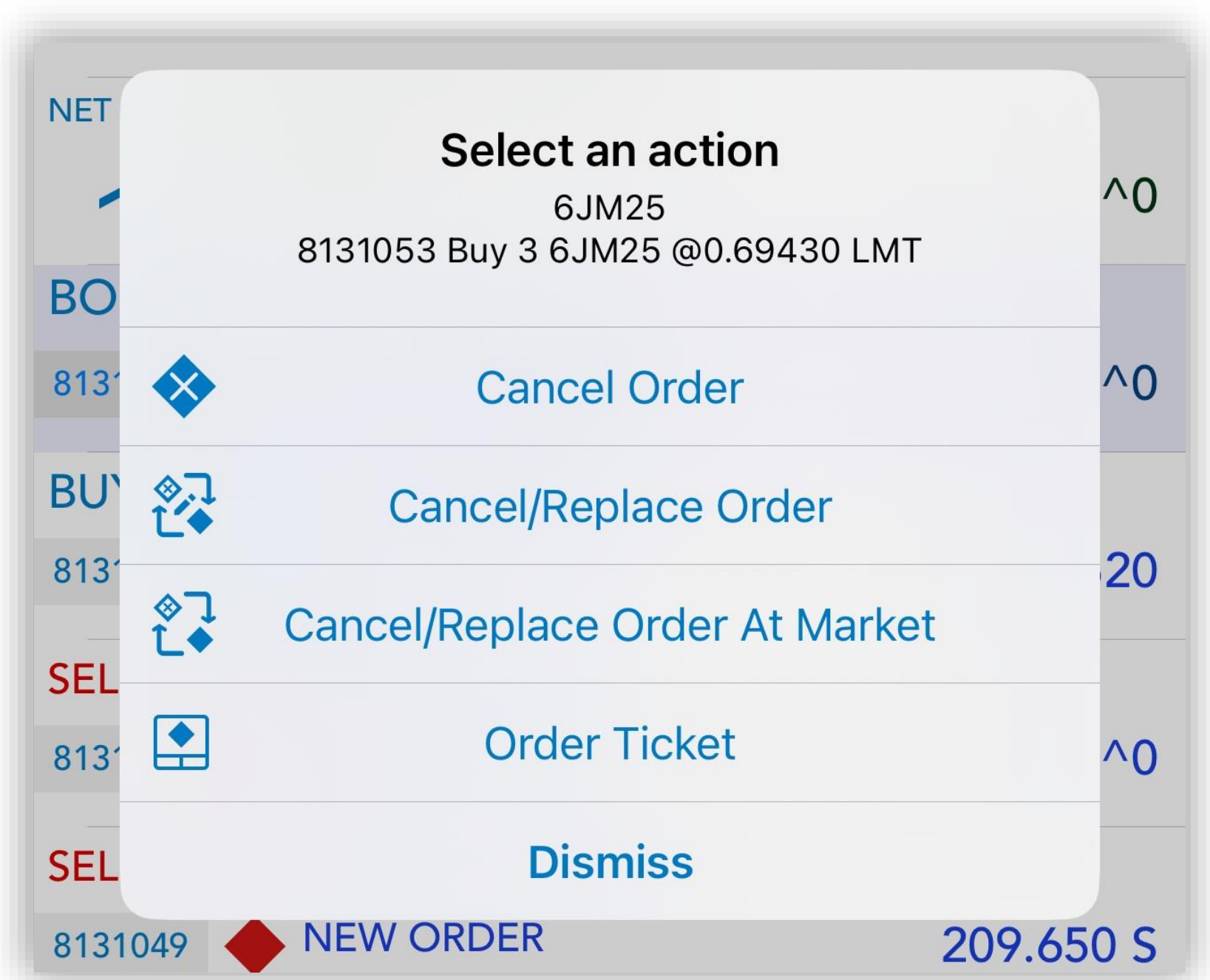
Quotes Monitor Screen > tap on any Quote
> tap  > tap on **Order Entry Bar**



More Order Entry Actions

1. Orders & Positions Monitor's Quick Action Menu

Long tap on any order or position to bring up **Quick Action Menu** > tap on desired OE action



2. Orders or Positions Detail

Order/Position Details

ORD. #

8131041

STATUS

New Order

LAST

464^2

SIDE

Buy

QTY

1

INSTRUMENT

ZCK25

PRICE

457^0

ORD. TYPE

LMT

LIFETIME

Day

ORDER TIME

07:06:43 AM

SESSION

Electronic

ACCOUNT

18025

ENTERED BY

Order/Position Details

STATUS

LAST

441^0

SIDE

Net Long

QTY

1

INSTRUMENT

ZCU25

PRICE

[441.2500]

PROFIT/LOSS

(\$12.50)

ORDER TIME


SESSION

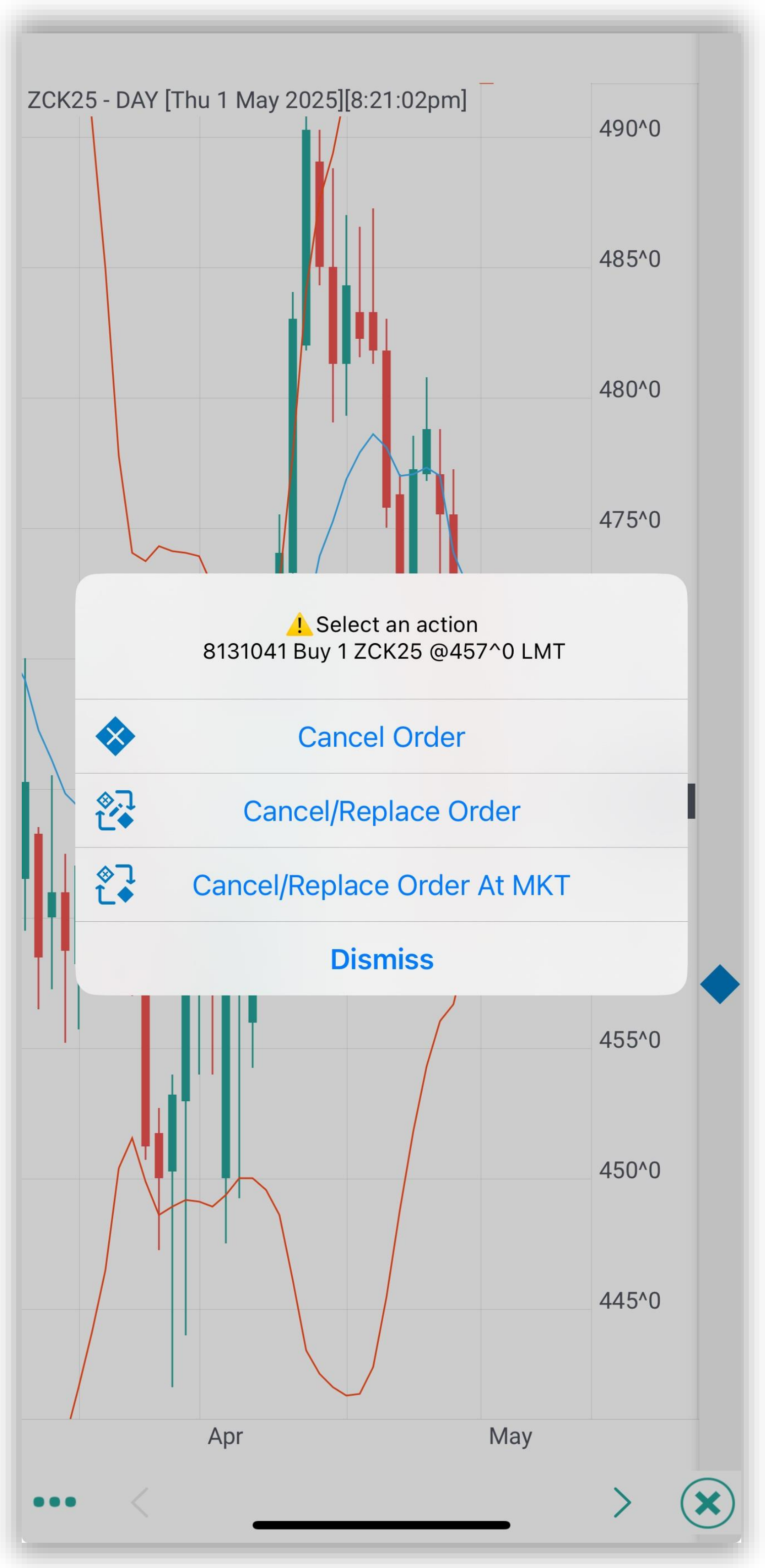
ACTIVE AT

ACCOUNT


18025

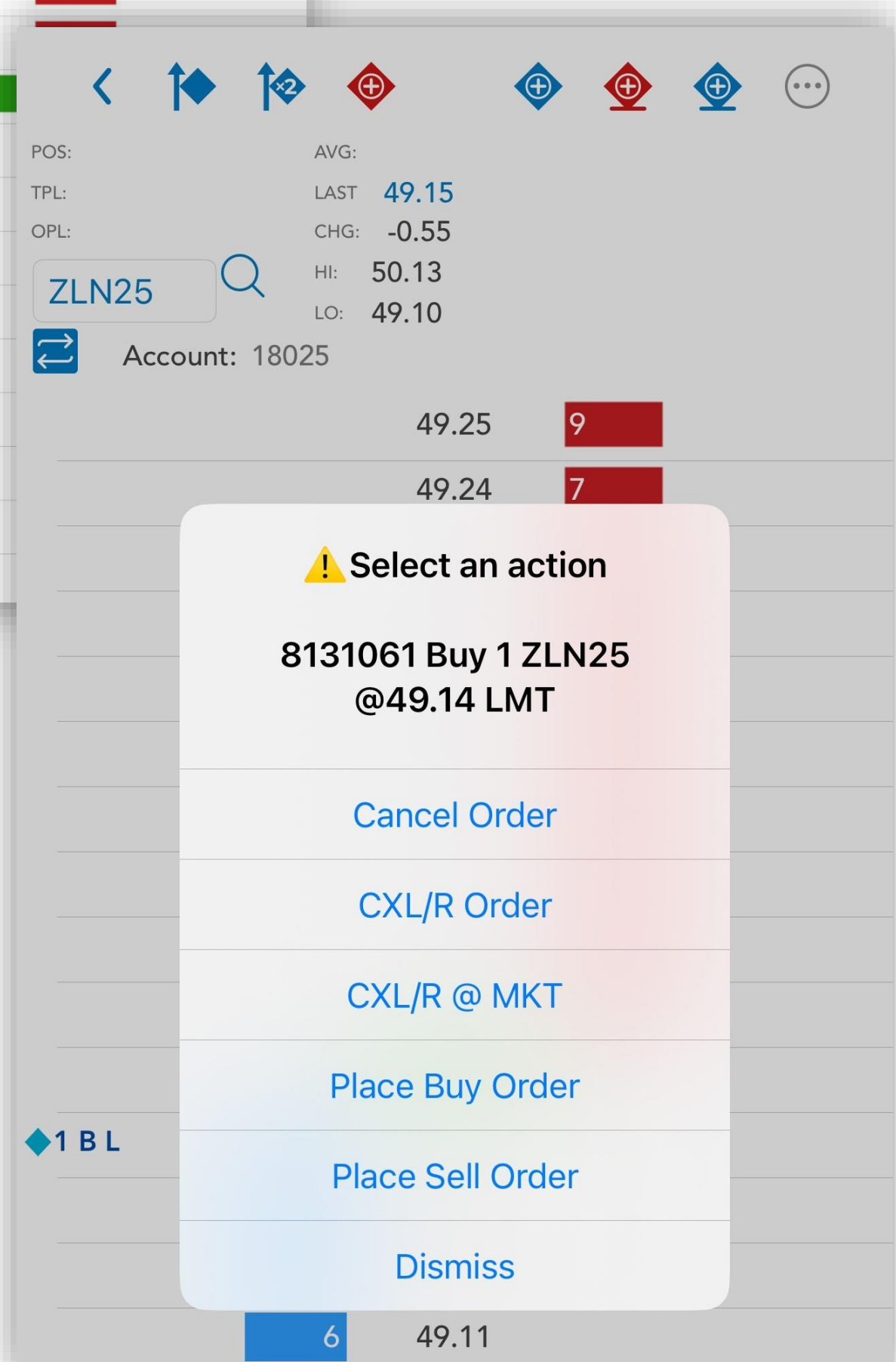
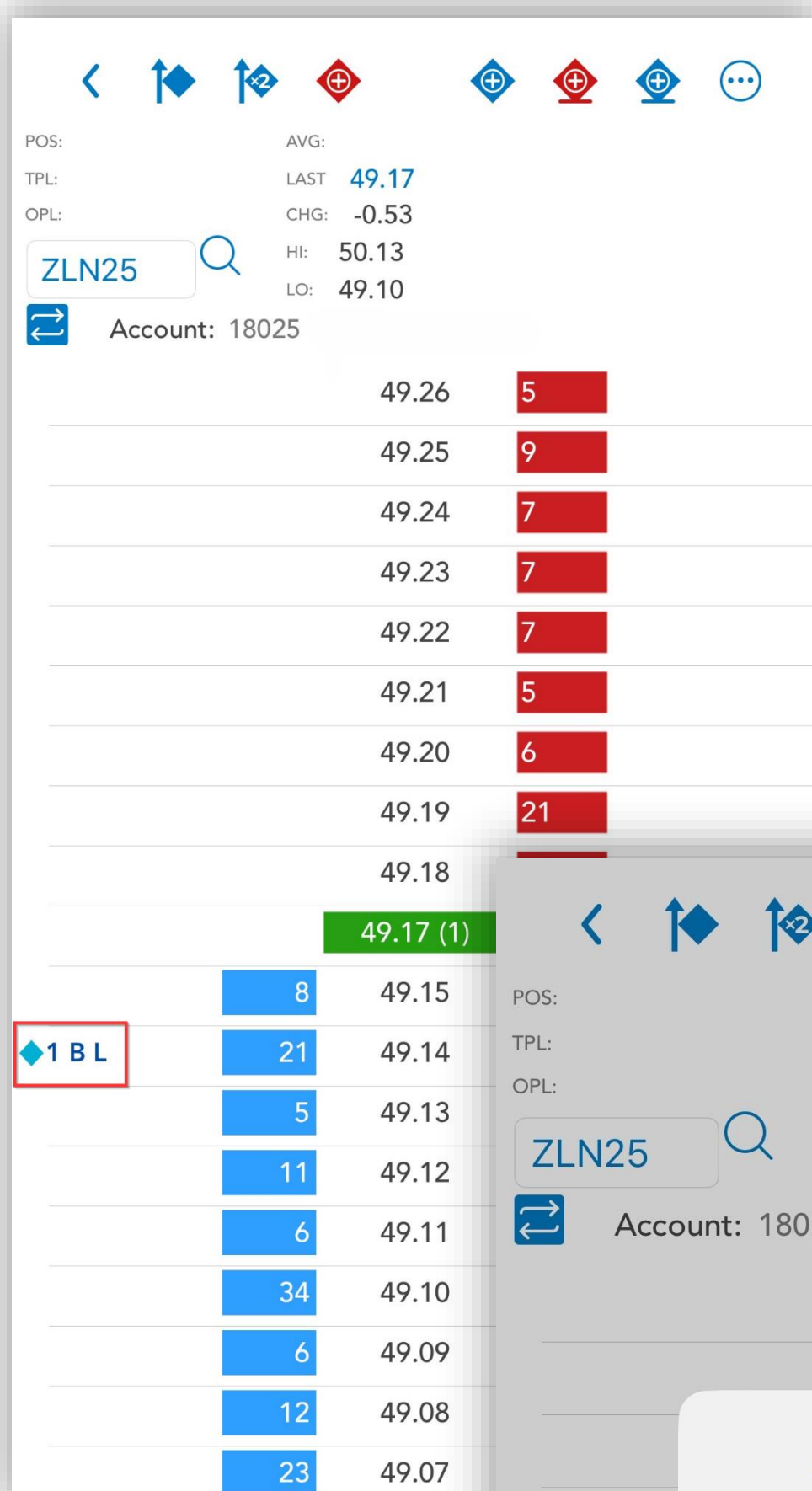
3. Full Screen Chart

Tap on any order symbol  > tap on order description > tap desired OE action



4. Price Ladder

Double tap any order symbol  > tap desired
OE action



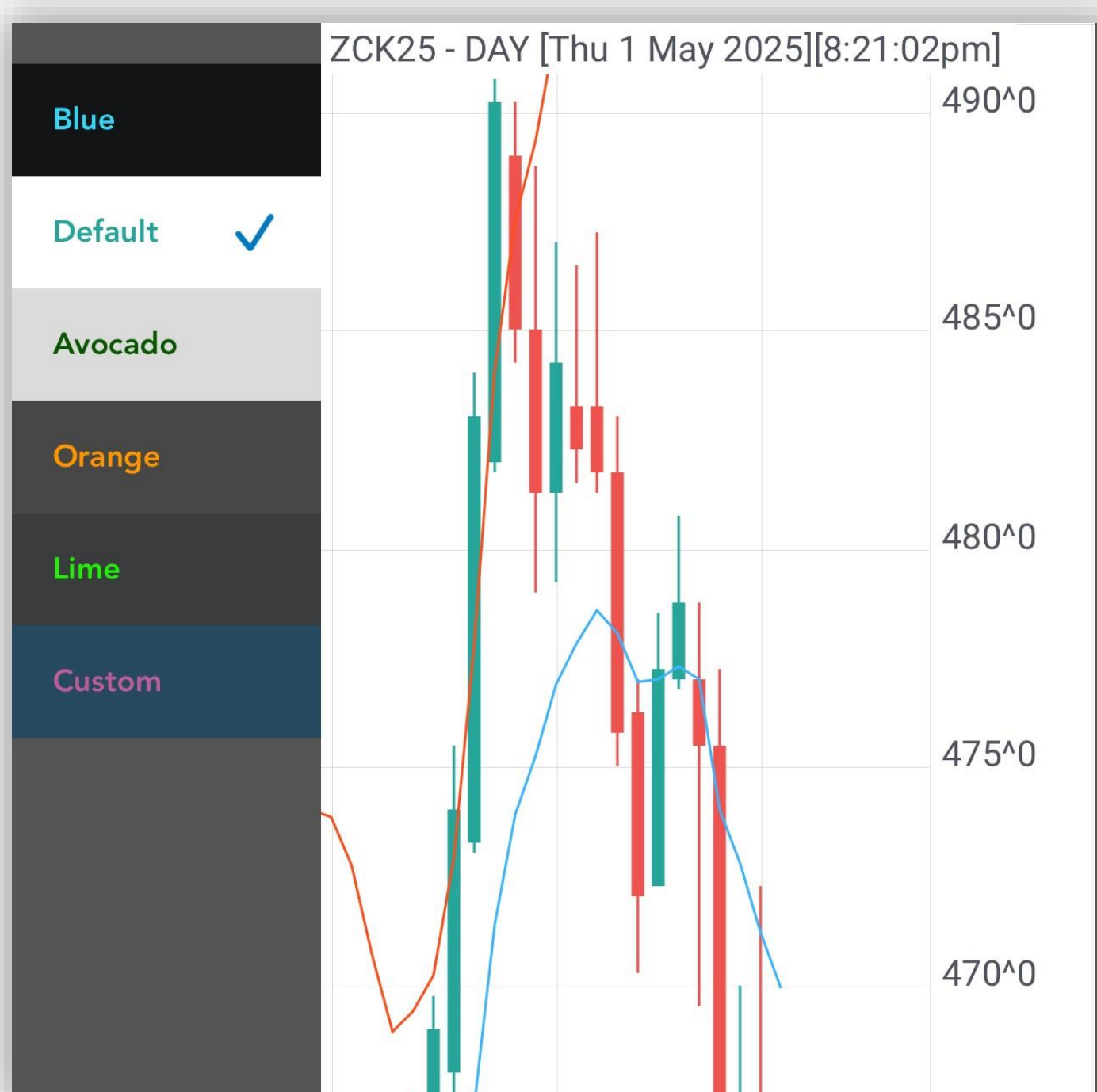
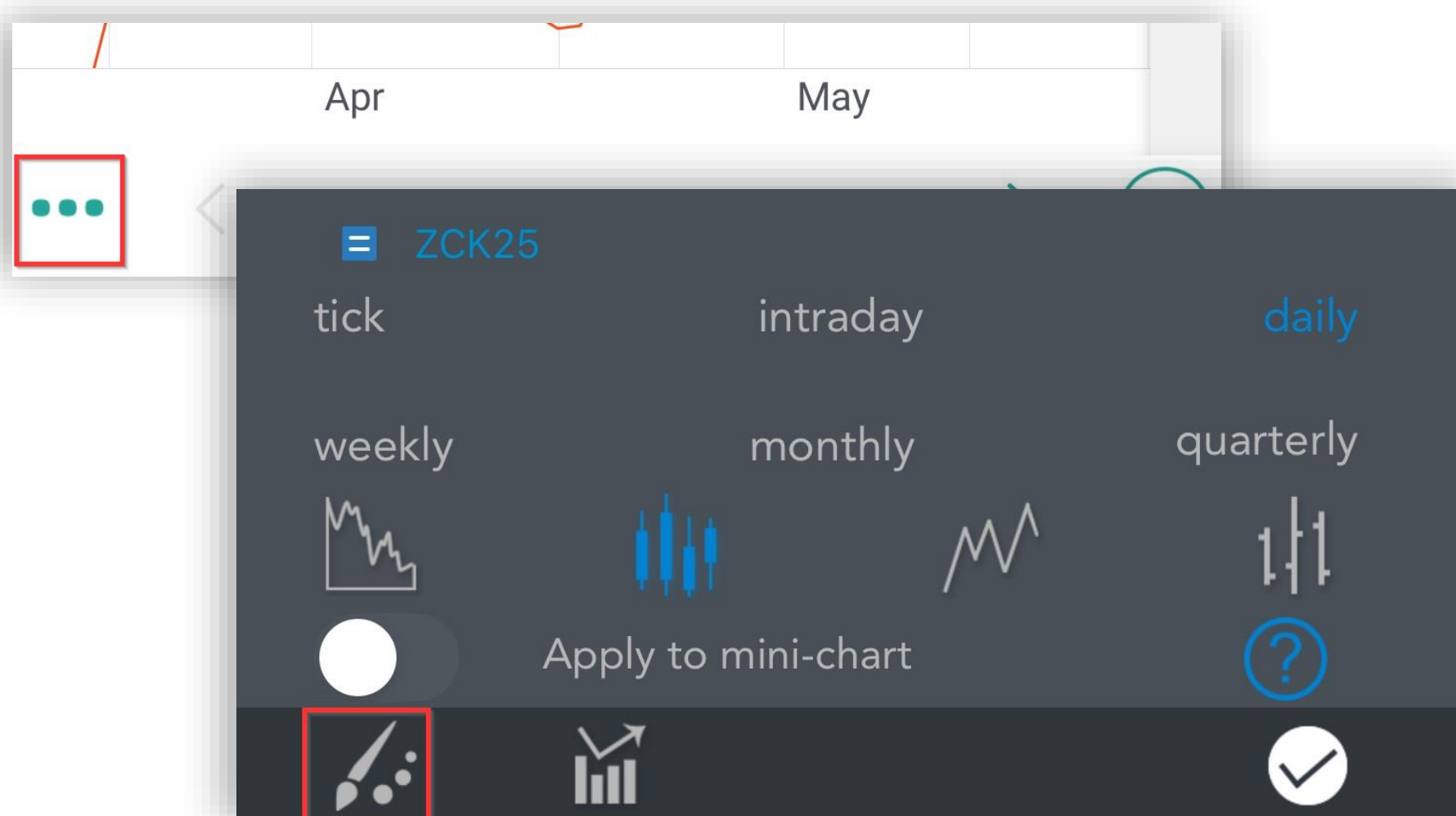
5. Full Screen Chart

5.1. Zooming & Panning

- You can Zoom In & Out by using pinch gestures.
- Use panning on **Time Scale** or **Price Scale** in order to visualize different areas of your chart.

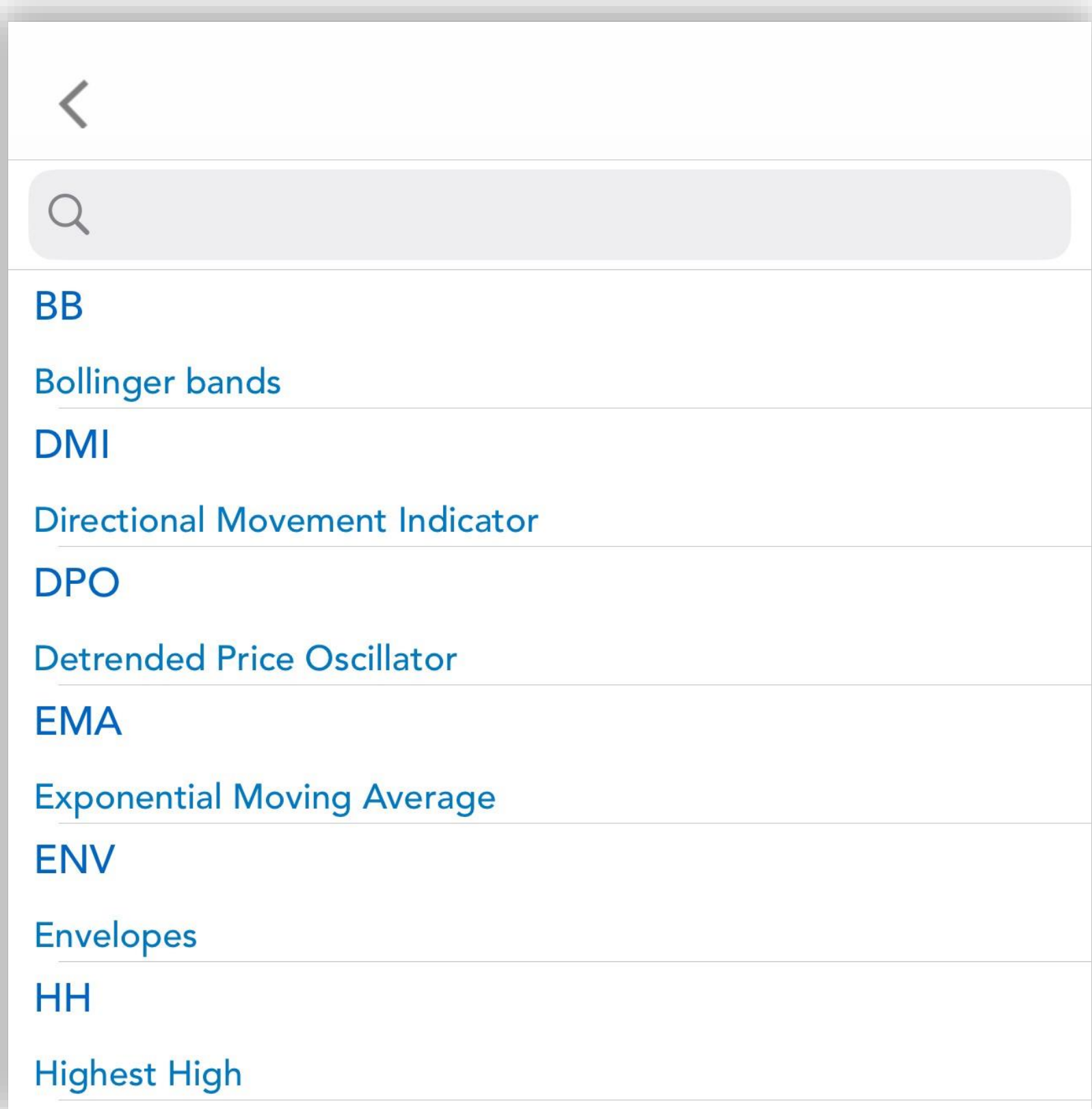
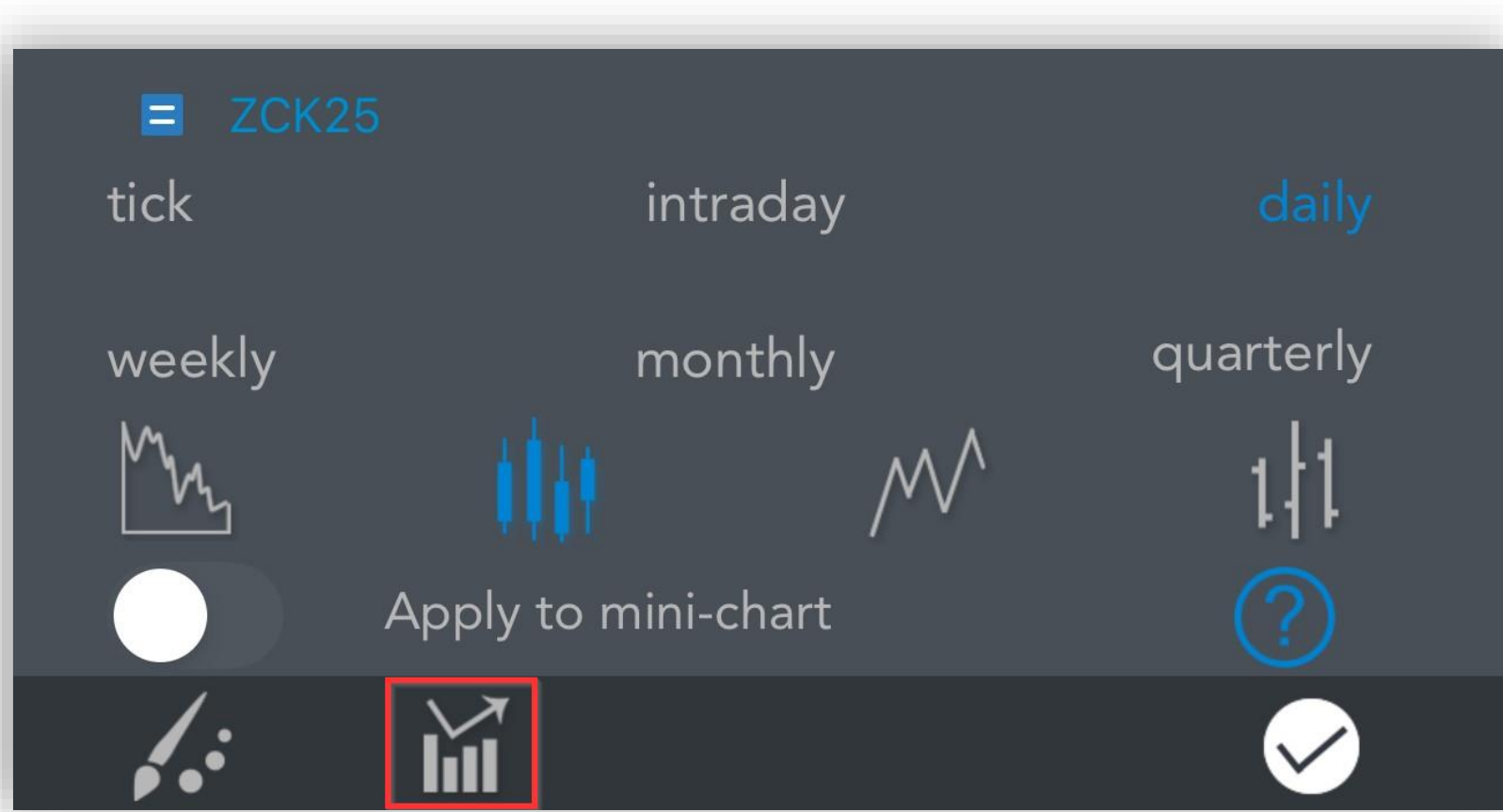
5.2. Themes

- Tap  > tap  > tap 



5.3. Indicators

- Tap  > tap  > tap 



Help inside the App

For more information: General > **Help** section